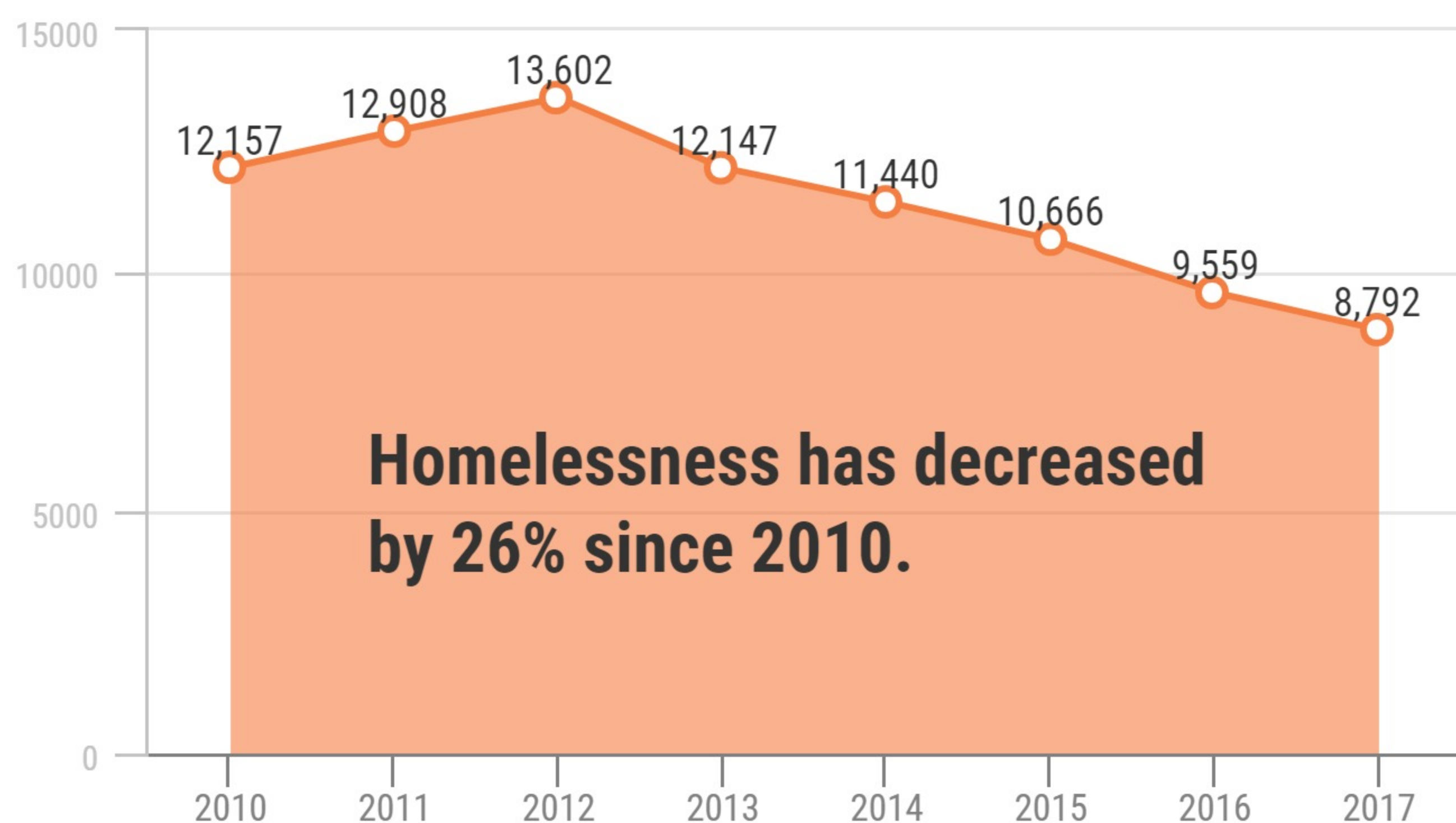
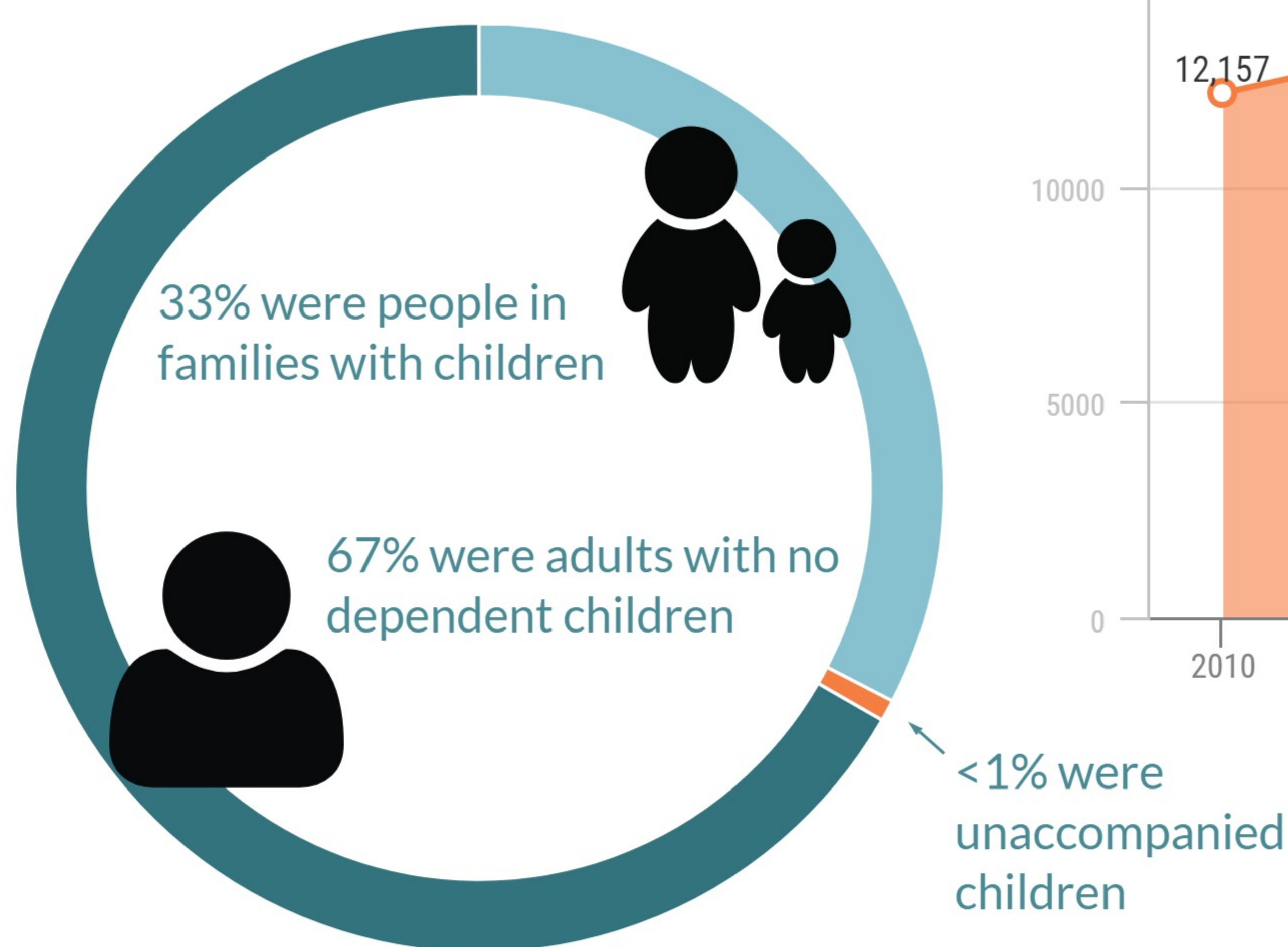
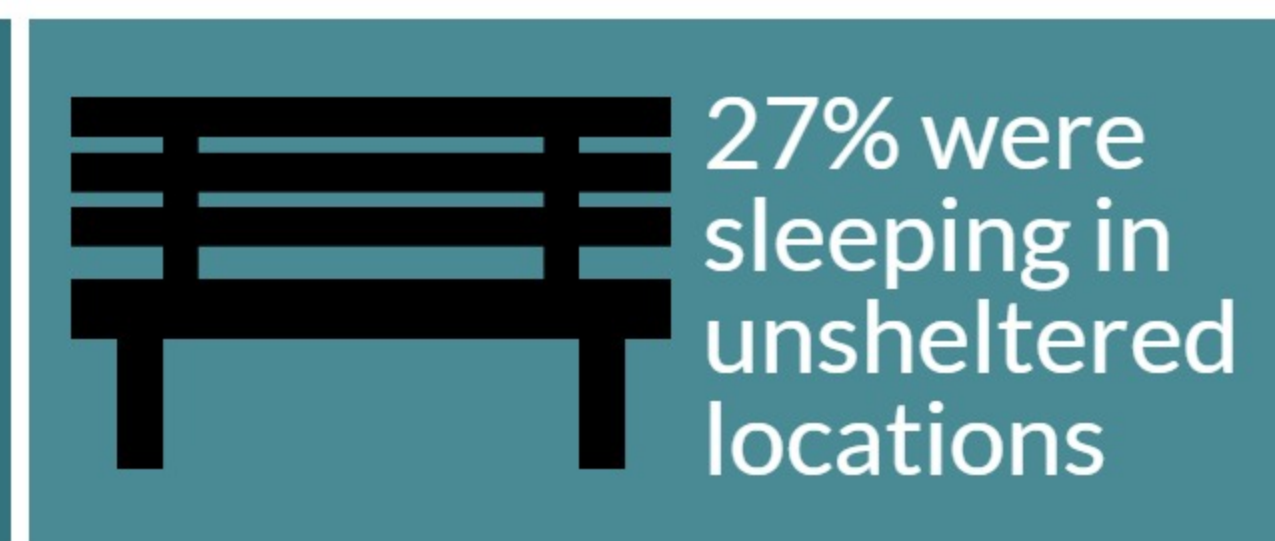
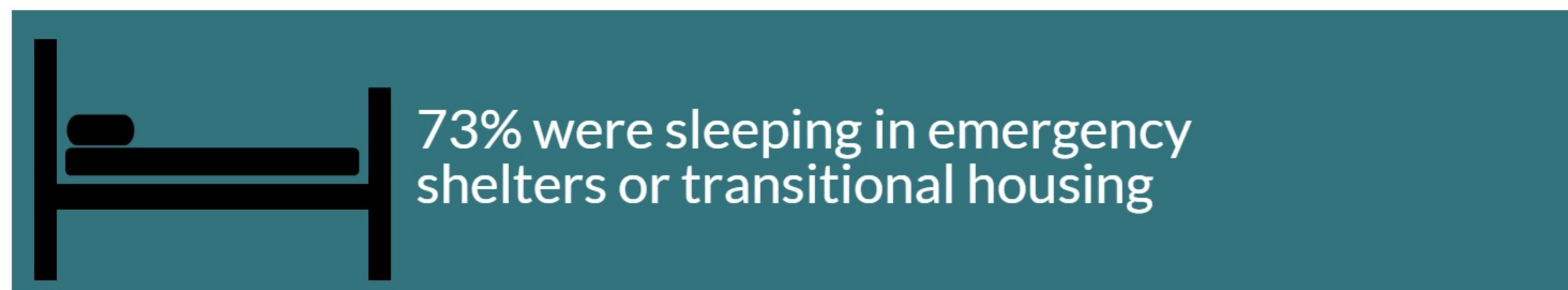
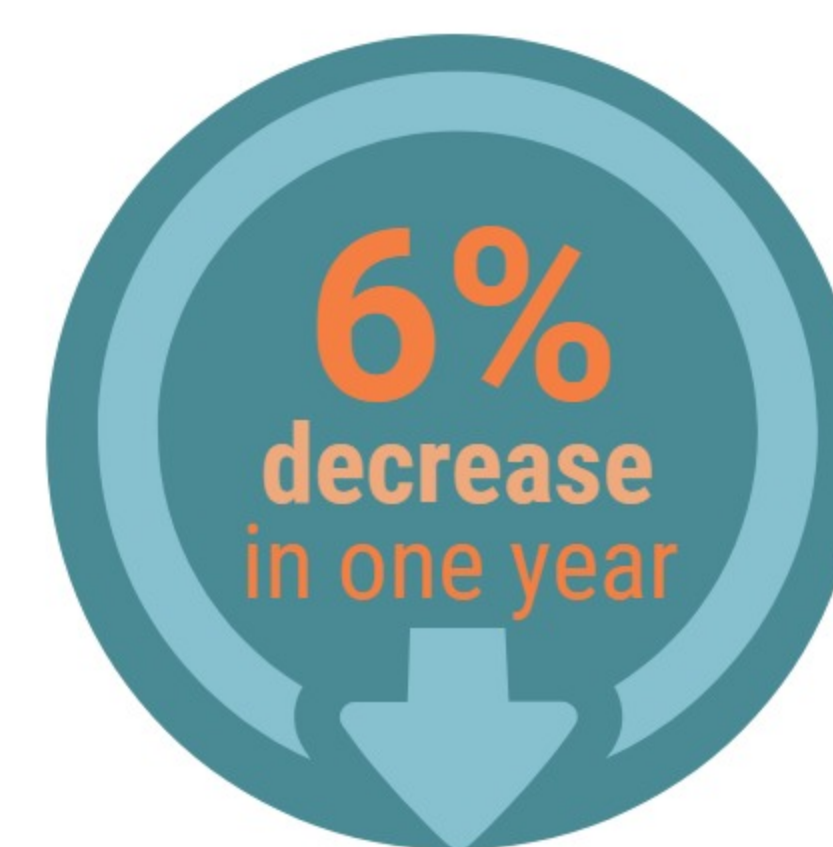
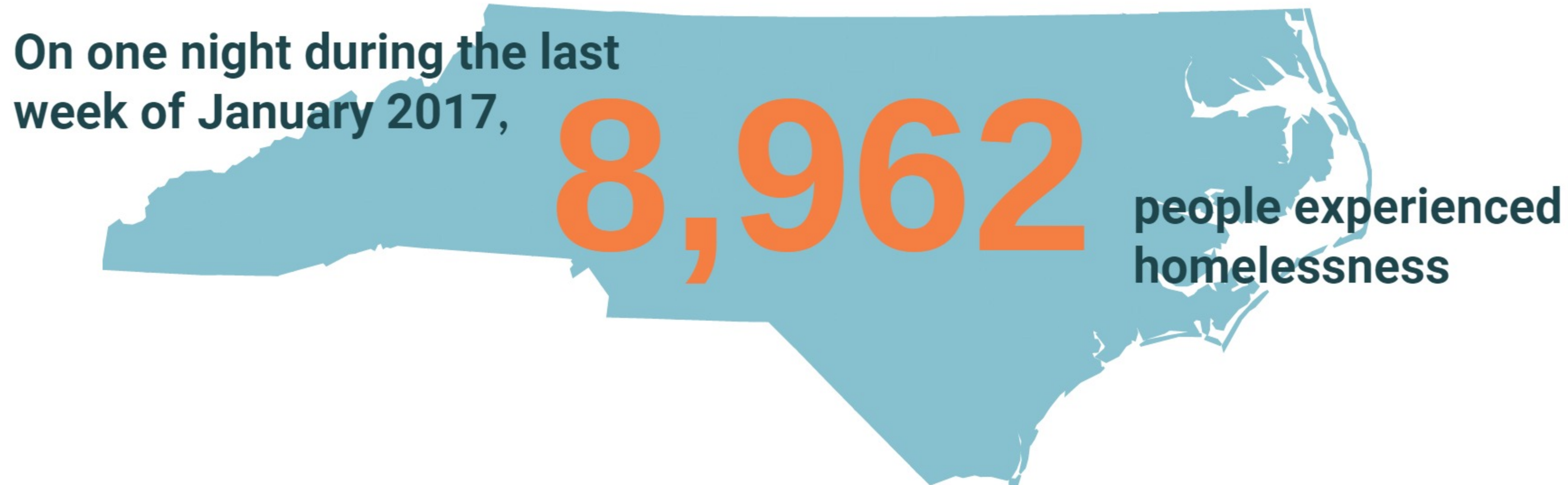
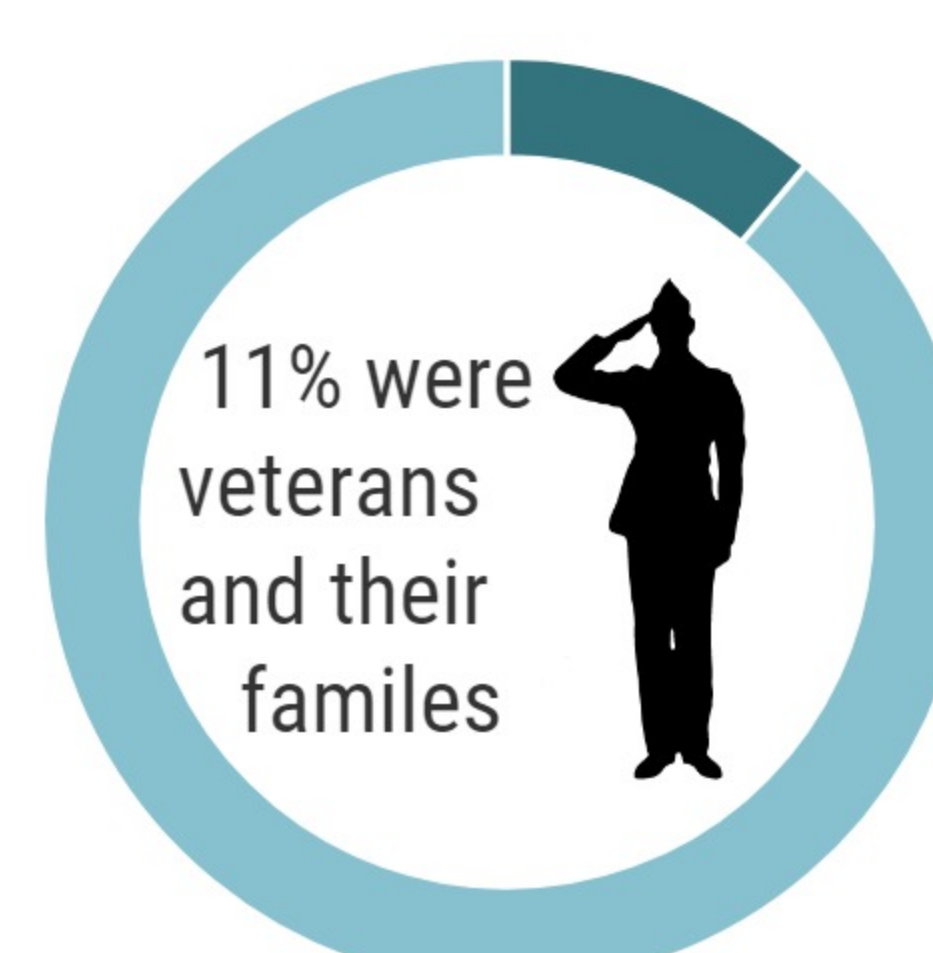
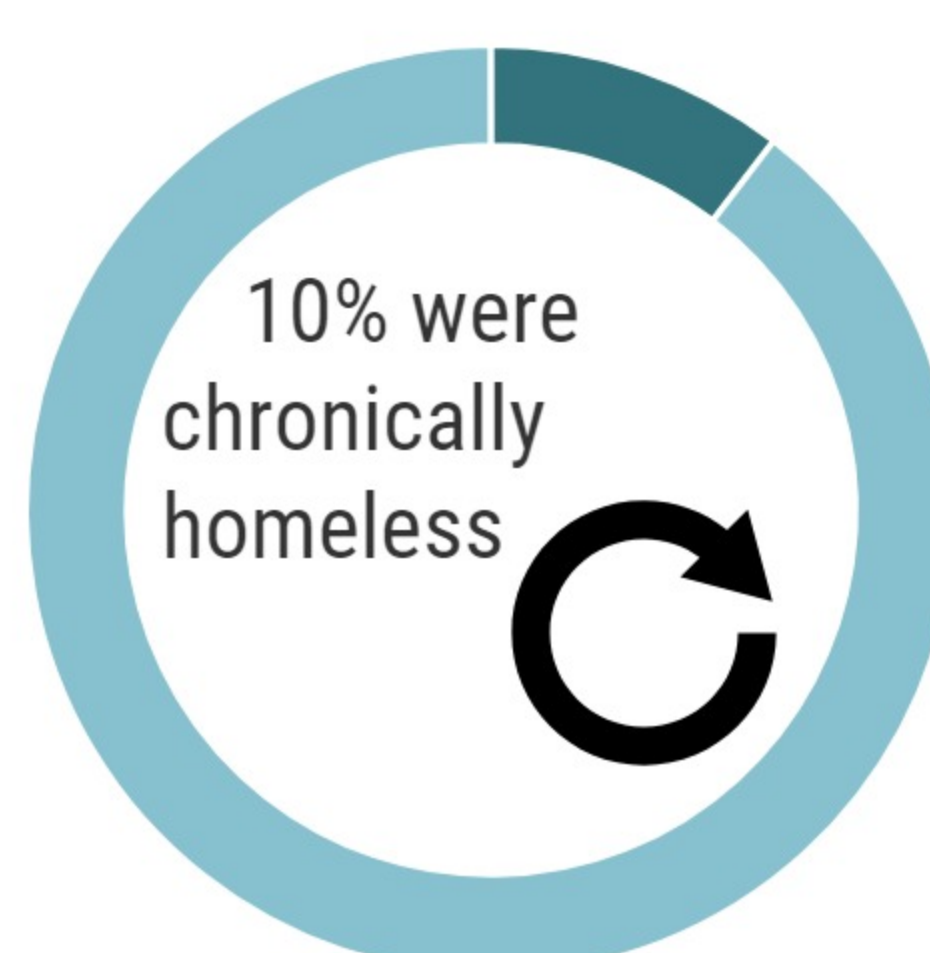
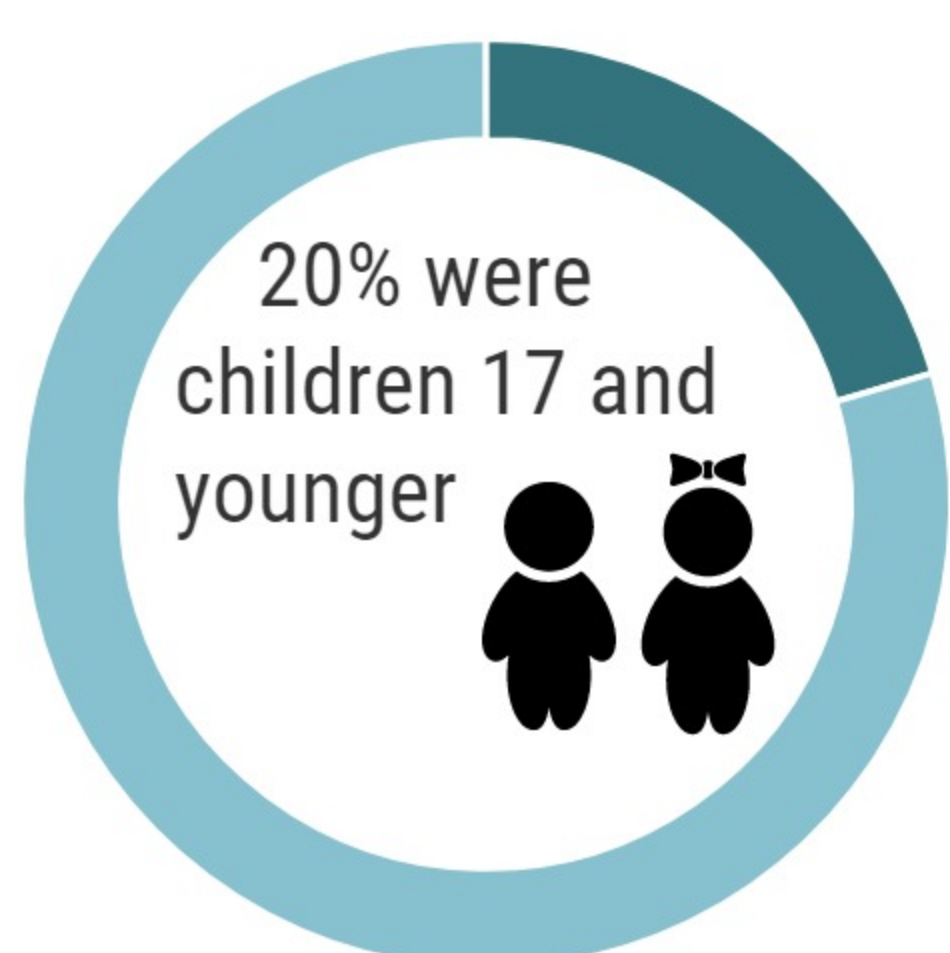
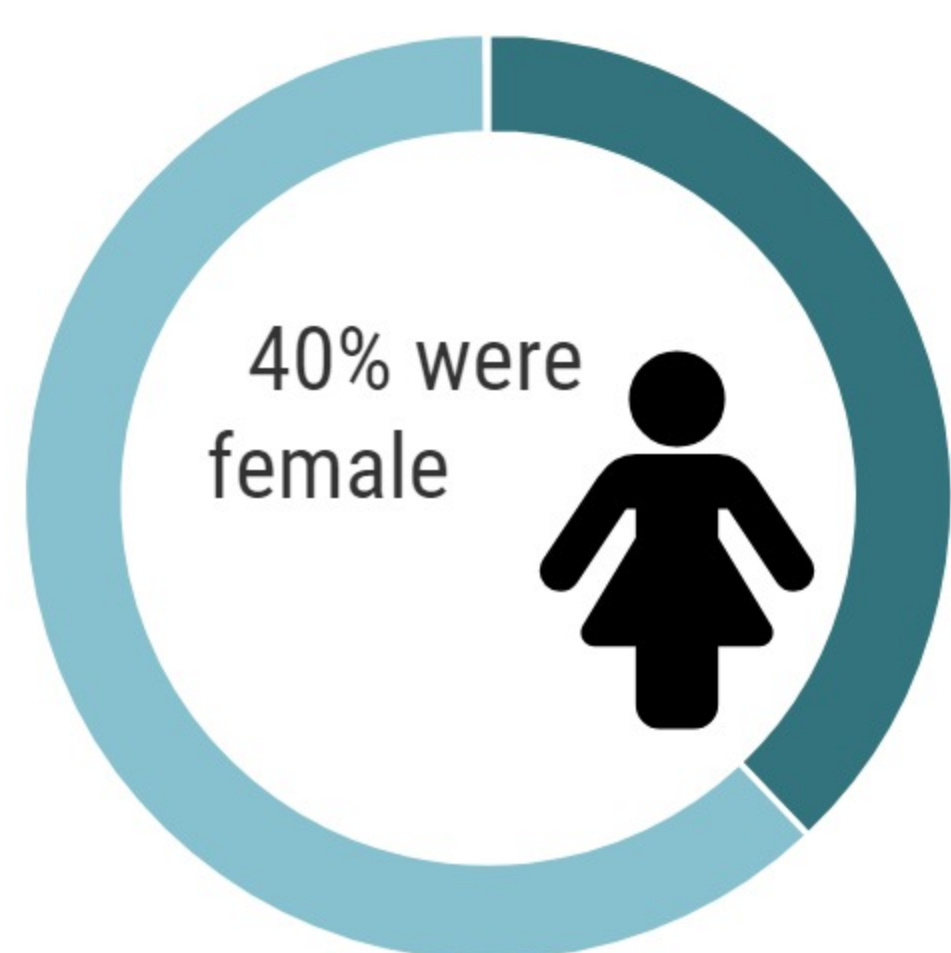


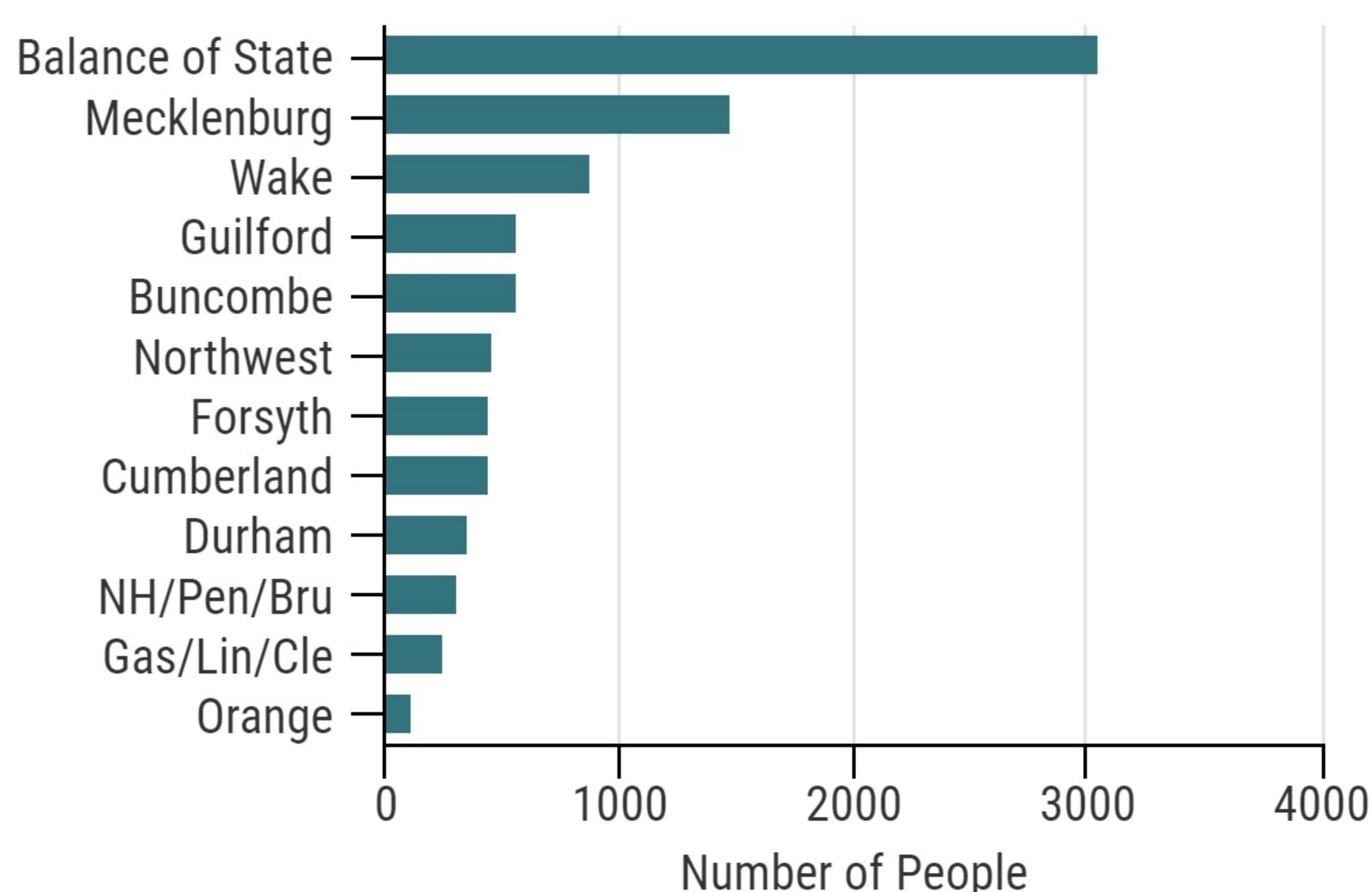
Who is experiencing homelessness in North Carolina?



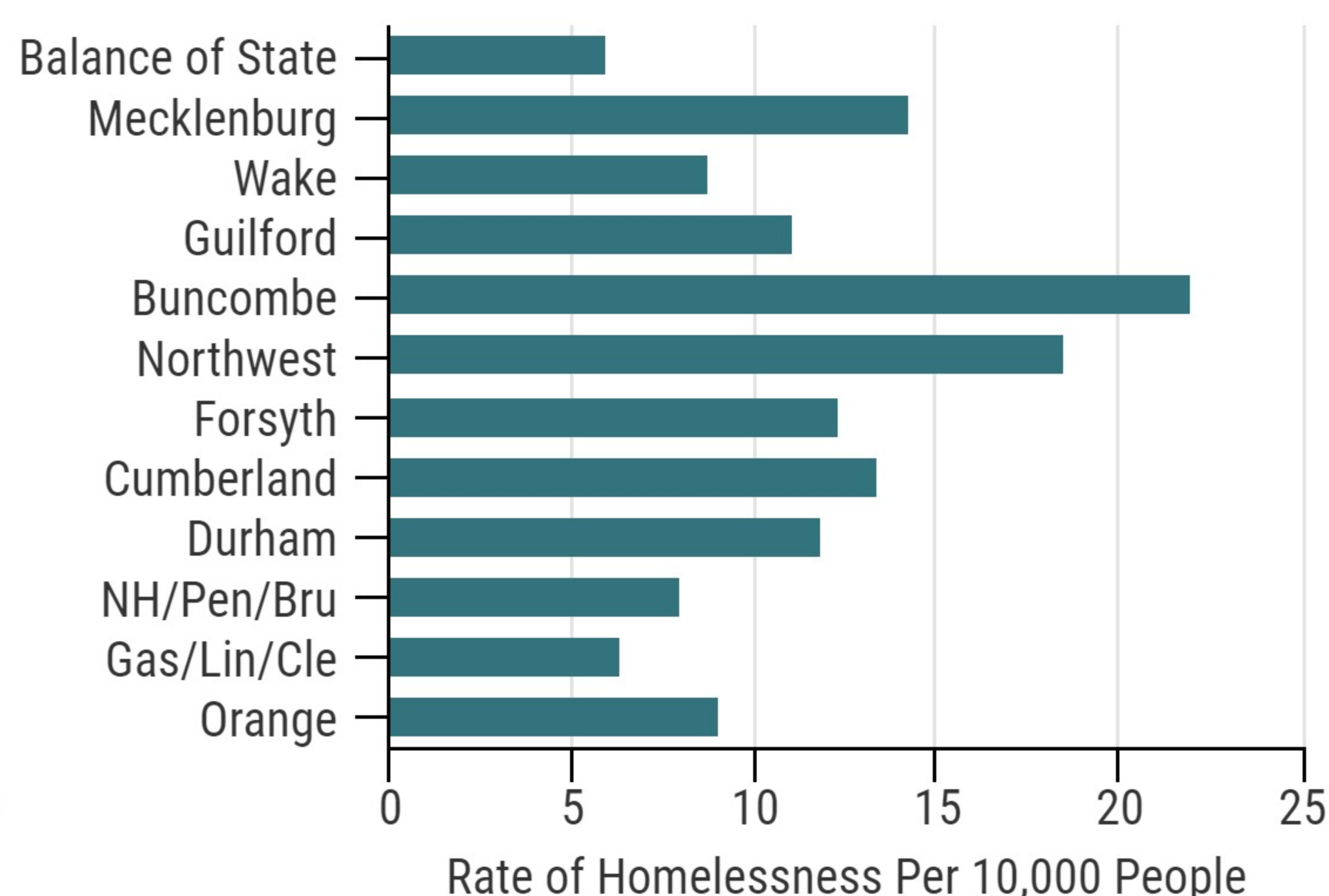
The Point-in-Time Count follows the U.S. Department of Housing and Urban Development definition of homeless: People who are living in a place not meant for human habitation, in emergency shelter, in transitional housing, or are exiting an institution where they temporarily resided.



Homeless Persons by CoC



Rate of Homelessness by CoC



The first graph presents the actual total number of homeless people in each Continuum of Care (CoC). The second presents the number of homeless people in the context of a CoC's population. The data is expressed per 10,000 people to allow for comparison between different-sized CoCs.