



Lee County Regional Housing Committee NC Balance of State Continuum of Care

Johnston-Lee-Harnett Community Action, Inc.
225 S. Steele Street, Sanford, N. C. 27330
(919) 776-0746

Wednesday, June 18, 2014 – 11:00 AM

Agenda

1. Welcome and Call to Order
2. Introductions
3. Approval of Minutes – May 21, 2014
4. Discuss Intent to Apply
5. Discuss Draft Coordinated Assessment Toolkit
6. Discuss Rapid Re-housing Program
7. Announcements

Next Meeting – July 16, 2014 at 11:00 a.m.

Lee County Regional Housing Committee
NC Balance of State Continuum of Care
Meeting Minutes, May 21, 2014 – 11:00 AM
Sanford Housing Authority, 1000 Carthage Road, Sanford, NC 27330

In Attendance:

Chondrika Ray, Johnston-Lee-Harnett Community Action, Inc.
E. Marie Watson, Johnston-Lee-Harnett Community Action, Inc.
Fredrika Cooke, Family Promise
Susan King, Haven of Lee County
Vanessa Colvin-McLaughlin.
Ester Goeke-Volunteers of America
Karen Engle-Sanford Housing Authority
Linda Ware, Johnston-Lee-Harnett Community Action, Inc
Chandra Hyacinth-Sanford Housing Authority

Welcome and Call to Order

Mrs. Watson welcomed those in attendance and called the meeting to order.

Introductions

All in attendance introduced themselves.

Approval of Minutes

The minutes were reviewed and . Mrs. King made the motin to accept the minutes, seconded by Mrs. Cooke. The motion carried.

Discuss Point of Entry

Mrs. Watson mentioned there needs to be one place client can seek out to receive help instead of applications to every program all over the county. See asked a committee be devised to make this accomplishment. F. Cooke, C. Ray, S. King and V. McLaughlin, all volunteered to be part of this committee.

Rapid Re-housing

Chondrika Ray, one the processing case managers of Rapid Re-Housing, was pleased to say the majority of the clients applying for the program have been approved and have found suitable

housing. Van Harris Realty, is just one of the many realtors who have been very helpful and patient with housing some the client in the Rapid Re-Housing Program. Fredrika Cooke the director of Family Promise, stated she has sent 22 referrals from just her agency alone over to the Rapid Re-Housing program.

Announcements

Starting June 2, 2014, Family Promise is starting a program Living Lesson/Building Mental Health every Monday, between 6:30-7:30 p.m. until July 21, 2014. Recipient and graduates of the Family Promise are to attend the Monday meetings. Chondrika Ray stated clients of Rapid Re-Housing are required to be in attendance to the meetings to meet all criteria as formulated with the Housing program.

Living Lesson will discuss budgeting, self esteem/worth, extended resources, crisis intervention and other daily living factors.

Haven of Lee County is still going strong. Susan King said as long as she is the director the doors will close again. At this present time there are 16 people taking residents at the Haven Shelter, 8 adults and 8 children. They are holding a 20 hour training session for volunteers for the crisis hotline. Mrs. Watson, Mrs. Ware both suggested to Mrs. King she contact WorkForce at the Employment Commission to get volunteers for the hotline. Recipients of WorkForce and Work First are basically getting paid through the government programs and volunteering at Haven will help the requirement hours for WorkForce and Work First.

Home Ownership Education Workshop, the tentative date is June 14, 2014 from 9-3 p.m.

Free for individuals in the Section 8 program and already living in Public Housing.

\$25-individual

\$44-couples

Lunch will be included

There are 3 bedroom apartments available on Public Housing with a short waiting list. Rent is based on income. Criminal background check is required.(Housing goes back five years to date of release of jail.)

Adjournment

There being no further business the meeting adjourned at 12:00p.m. The next meeting will be held at Johnston-Lee-Harnett Community Action

Submitted by:

Vanessa Colvin-McLaughlin, Secretary



2014 BoS ESG Intent to Apply

If you are interested in applying for ESG funds in the FY14-15 funding cycle, please complete this form. This information will be sent to your regional committee. NCCEH staff will not respond. If you have additional questions, please contact us at bos@nceh.org

Name of Organization *

What counties will be served by this project? *

Street Address *

Primary Contact Name *

Primary Contact Title *

Primary Contact Phone *

Primary Contact Email *

Agency Website

Are you a current ESG Grantee? (Receiving funding from the FY13-14 application?) *

Emergency Shelter Grantee *

Did you receive funding for Emergency Shelter through the FY13-14 ESG application?

Transitional Housing Grantee *

Did you receive funding for Transitional Housing through the FY13-14 ESG application?

Rapid Re-Housing Grantee *

Did you receive funding for Rapid Re-Housing through the FY13-14 ESG application?

Targeted Prevention Grantee *

Did you receive funding for Targeted Prevention through the FY13-14 ESG application?

Seeking Emergency Shelter *

Will you be applying for Emergency Shelter funding in this year's application?

Seeking Transitional Housing *

Will you be applying for Transitional Housing funding in this year's application?

Seeking Rapid Re-Housing *

Will you be applying for Rapid Re-Housing funding in this year's application?

Seeking Targeted Prevention *

Will you be applying for Targeted Prevention funding in this year's application?

What household type(s) will this project serve? *

Will your project target specific sub populations? *

DV *

Will your project serve DV only?

Other sub population: *

List the sub-populations that you anticipate targeting (e.g. women, veterans, etc.)

Does your agency enter data into HMIS (CHIN)? *

What is your Regional Committee? *

Who is your Regional Lead? *

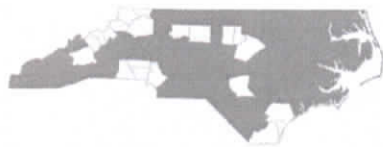
Who from your agency attends Reg. Comm. meetings? *

Send me a copy of my responses

Submit

Powered by [Smartsheet Web Forms](#)

[Report Abuse](#)



North Carolina Balance of State Continuum of Care

bos@ncceh.org

919.755.4393

www.ncceh.org/BoS

Coordinated Assessment Toolkit DRAFT TO REGIONAL COMMITTEES

June 2014

Background

General: Coordinated assessment, also known as coordinated entry or coordinated intake, is a system that allows for a coordinated entry into your local homeless services. Coordinated assessment increases the efficiency of a homeless assistance system by standardizing access to homeless services and coordinating program referrals. As part of the HEARTH regulations that govern Continuum of Care (CoC) and Emergency Solutions Grant (ESG) funding, the U.S. Department of Housing and Urban Development (HUD) requires all CoCs across the United States to implement coordinated assessment.

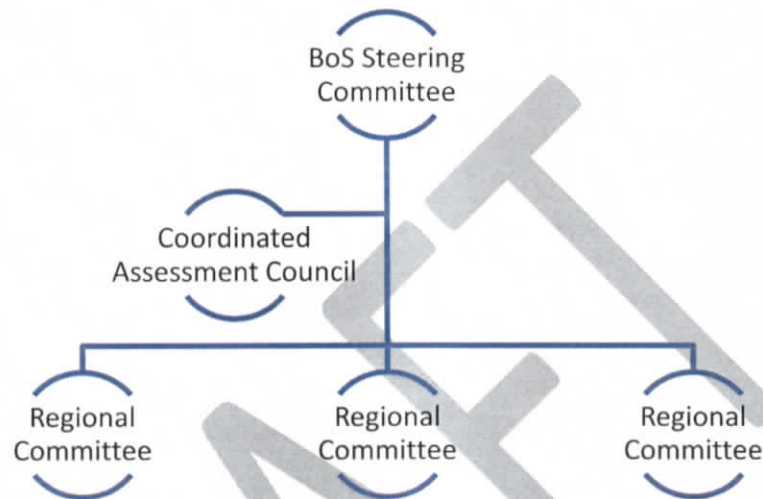
NC Balance of State (NC BoS) Coordinated Assessment Vision Statement: Coordinated assessment assists the NC BoS CoC to end homelessness by increasing exits to housing, decreasing length of time homeless, and reducing returns to homelessness. Consumers will quickly access appropriate services to address housing crises through a right-sized, well-coordinated agency network.

Guiding Principles: Across the NC BoS, all locally designed and operated coordinated assessment systems will be:

- Sustainable – resources required to operate the CA system are identified and available now and for the foreseeable future
- Flexible – localization and customization is allowed based on community needs, resources, and services available
- Transparent and accountable – consumers know what is being done and why, agencies have their program rules on the table, there are clear appeal and grievance process for both consumers and agencies
- Housing-focused – people experiencing housing crises return to permanent housing within 30 days, in compliance with HEARTH
- Client-focused – system is accessible, leaves no one behind, and accommodates choice/need
- Collaboration-focused – system is operated from broad-based consensus, system linkage responsibilities are managed by partnerships with integrity, agencies hold each other accountable and exhibit a willingness to cooperate
- Easy to use – system is not cumbersome to agencies, is also accessible and well-known to the community

Governance

General Structure: Coordinated assessment in the NC BoS will be designed and administered at the Regional Committee level with standards and governance provided by the NC BoS Steering Committee. The Steering Committee will appoint a standing Coordinated Assessment Council to review, provide feedback on, and ultimately approve coordinated assessment plans written by Regional Committees. The Coordinated Assessment Council will be made up of representatives from across our CoC and other state-level experts.

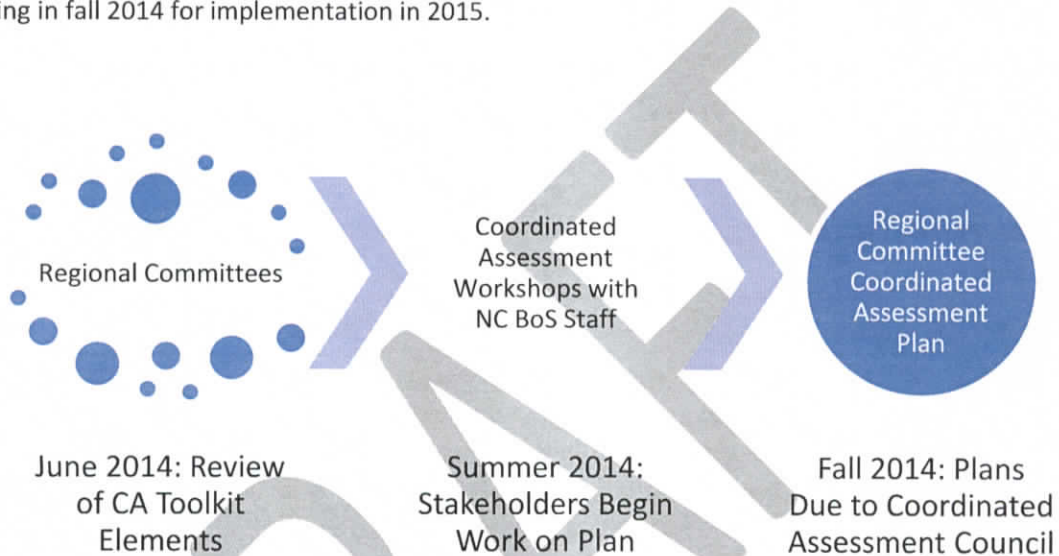


Role of Regional Committee: Each Regional Committee will design a local coordinated assessment system within parameters contained in this Toolkit. The Toolkit, scheduled to be approved by the Steering Committee in August 2014, gives Regional Committees a supportive framework to use while building local systems as well as standardized pieces that will be uniform across our CoC – including the 3-part Coordinated Assessment Tool that Regional Committees will use to divert, assess, refer, and case manage households experiencing homelessness.

Grievance: As part of the coordinated assessment plan, Regional Committees will create a grievance process for clients and agencies using the system to formally bring their concerns to the Regional Committee. Local grievance procedures will handle the majority of issues. For issues that cannot be resolved at the local level, grievance concerns can be appealed to the Coordinated Assessment Council of the NC BoS Steering Committee for resolution.

Next Steps

Timeline for Plans & Implementation: Regional Committees will elect a Coordinated Assessment Lead to serve as the point person for coordinated assessment matters on the local level. Key stakeholders from each Regional Committee will be invited to participate in a coordinated assessment workshop with like-sized Regional Committees in summer/fall 2014 to work on Regional Committee coordinated assessment plans using the Regional Committee Plan form. Regional Committees will return completed forms to the Coordinated Assessment Council of the NC BoS Steering Committee in fall 2014. The Coordinated Assessment Council will approve Regional Committee coordinated assessment plans starting in fall 2014 for implementation in 2015.



Coordinated Assessment Models

Coordinated assessment in the NC BoS will have standardized elements and yet have flexible design and implementation to meet each Regional Committee's unique needs. Regional Committees will choose one of the following models:

- Centralized: Designated agency or agencies within a community will handle intake and referrals OR
- Decentralized: All agencies will employ the common assessment and referral system for intake

Regional Committees will design a plan for how coordinated assessment referrals will work locally using the three-part Coordinated Assessment Tool and the Regional Committee Plan form.