

NC BALANCE OF STATE
CONTINUUM OF CARE:
EMERGENCY SOLUTIONS GRANTS
REGIONAL MEETINGS

DENISE NEUNABER & EMILA SUTTON
APRIL 10, 12, & 16, 2012



North Carolina Coalition to End Homelessness

securing resources • encouraging public dialogue • advocating for public policy change

919.755.4393 • www.ncceh.org

HUD's Homeless Funding

- McKinney-Vento Homeless Assistance Grants
 - ▣ Continuum of Care Grants (CoC)
 - ▣ Emergency Solutions Grants (ESG)

- Reauthorized by the HEARTH Act
 - ▣ Changes to these two funding streams happening now

HEARTH Act Purpose

“to establish a Federal goal of ensuring that individuals and families who become homeless return to permanent housing within 30 days”

HEARTH Act Purposes – Sec. 1002(b)

Core HEARTH Measures

- 1. New homelessness**
- 2. Length of homelessness**
- 3. Repeat homelessness**

**Measures require evaluating performance across the entire CoC region

Continuum of Care

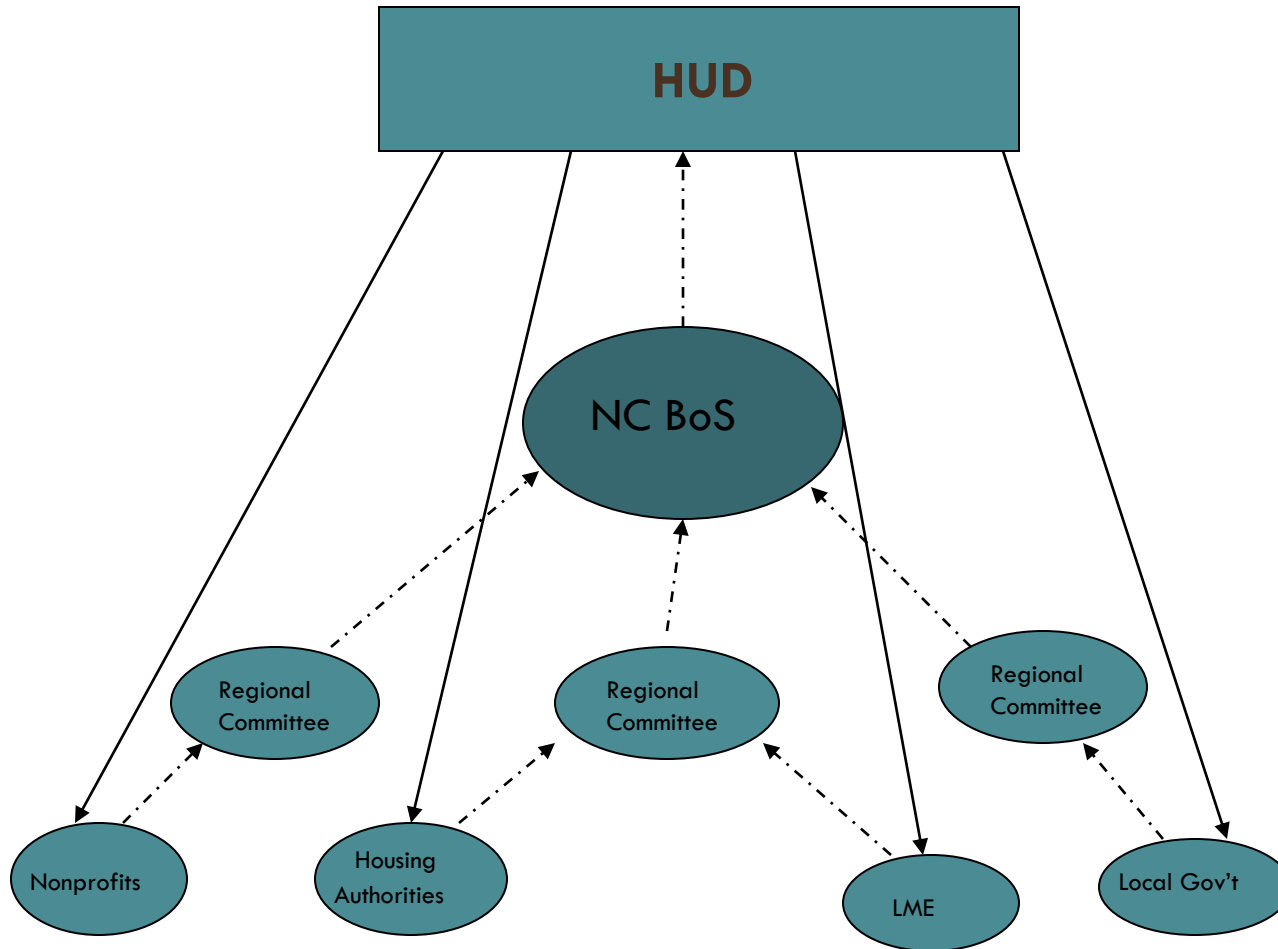
- The mechanism through which agencies apply for the competitive funds. Agencies cannot apply individually – must apply through CoC
- Highly Competitive Process
- Agencies directly or indirectly connected to Continuum of Services
 - Street Outreach – Shelter – Transitional – Permanent
 - Any person or agency that is working with homeless persons, persons at risk of homelessness, or have resources to end homelessness should be at the table.

Balance of State Continuum of Care

- 79 Counties
- Very Competitive Funding
- What one agency does affects all of us
- What one Regional Committee does, affects all of us

- NCCEH is contracted by the State Interagency Council for Coordinating Homeless Programs to coordinate and submit the BoS CoC federal grant application.

HUD – Balance of State Continuum of Care
Application Process
2006 – Present

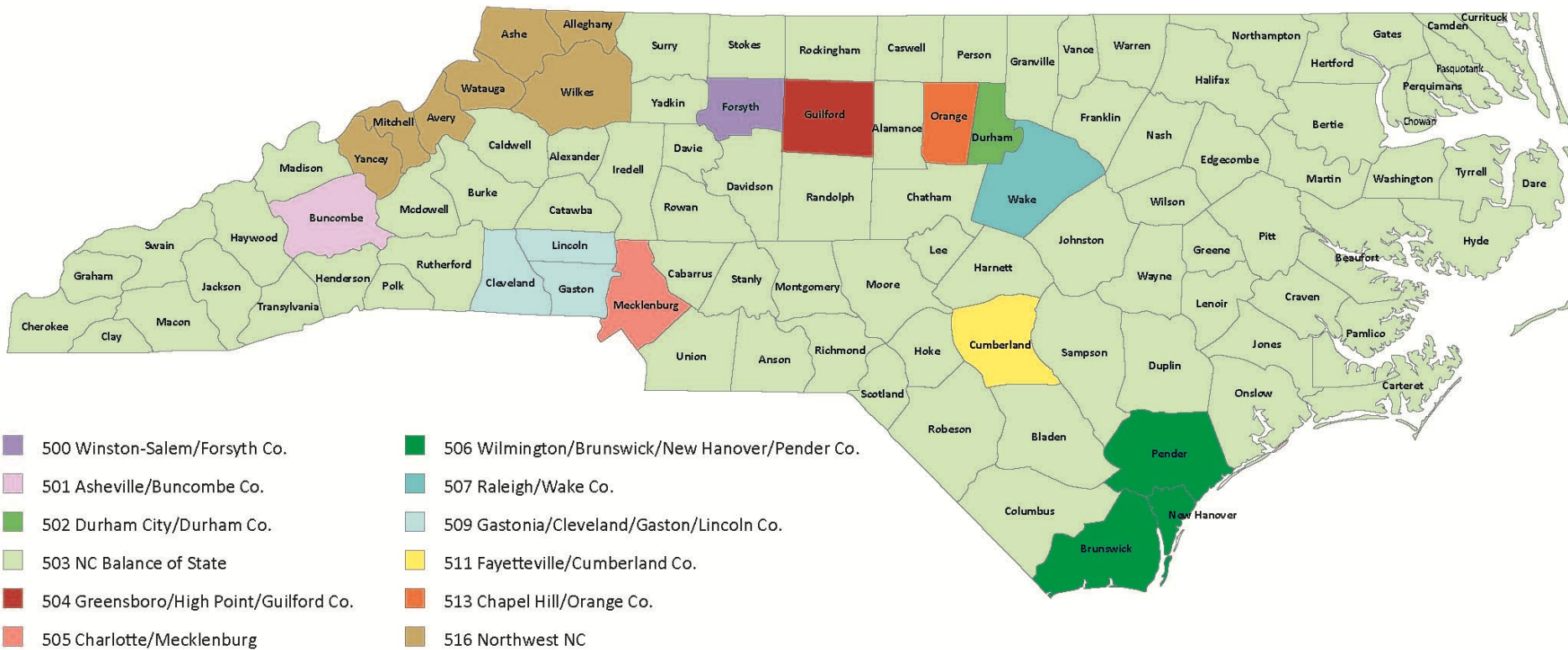


Legend:

-----> = Submit Application to HUD

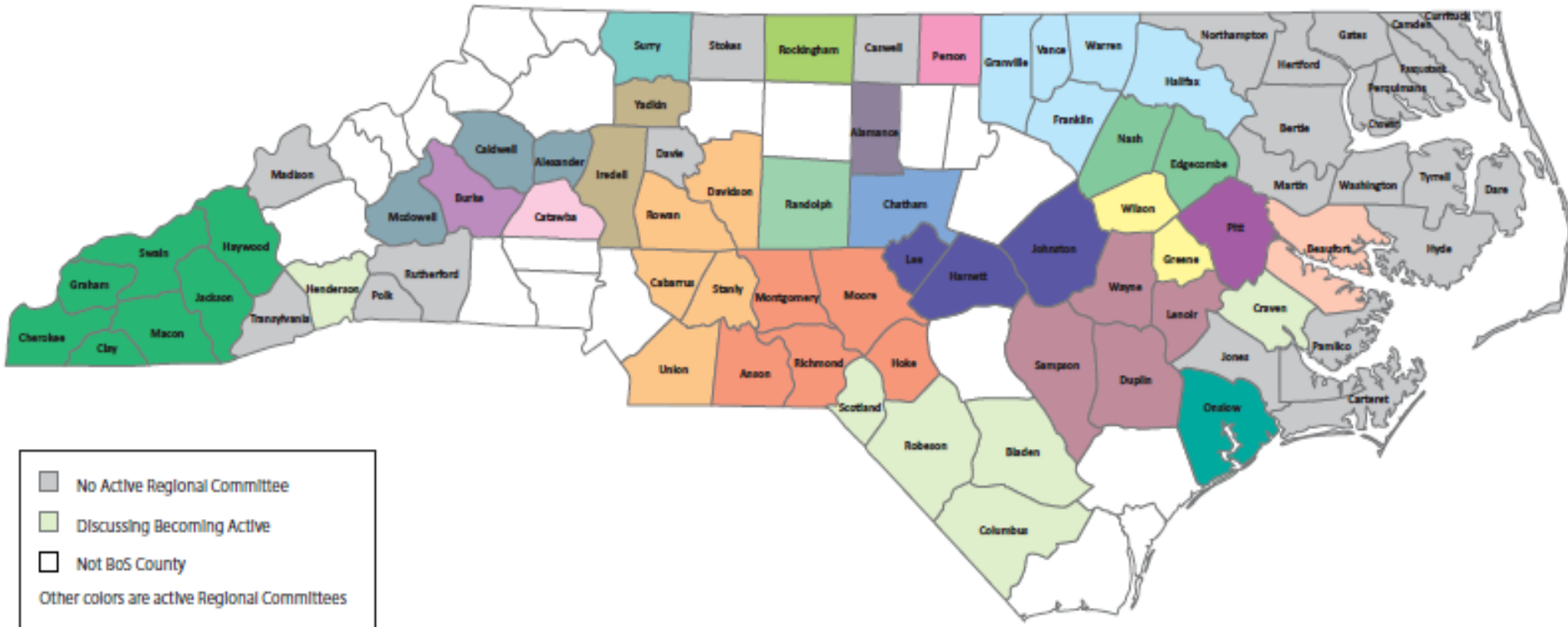
————> = HUD Contracts Directly with Local Entity

NC CoCs: 12 Continua of Care



Balance of State CoC Regional Committees

March 2012



■ No Active Regional Committee
■ Discussing Becoming Active
■ Not BoS County
Other colors are active Regional Committees



BoS Organization



Benefits of CoC and Regional Committees

- Share resources
- Establish need & gaps
- Coordinate housing and services
- Create a referral network
- Continuum of Care (CoC) \$
- Emergency Solutions Grants (ESG) \$
- Why is it important to participate even if you're not a grantee?

Participant Checklist and Application Flowcharts

- <http://www.ncceh.org/bos/>
- The checklist gives info on tasks that occur every year and who is responsible
- The flowcharts include information on the process in applying for CoC funds (not ESG)
- They serves as a good timeline for what to expect

Regional Committee's Responsibilities

- Ensure all stakeholders are involved
 - ▣ (use BoS participant form)
- Elect a Regional Lead annually (Jan, Feb, March meeting)
- Ensure your Regional Lead is able to fulfill responsibilities
- Learn more about homeless services that are operating in your community
- Participate in BoS Subcommittee Calls
- Select representative for Scorecard & Project Review Committee
- Begin to participate in HMIS
 - ▣ (minimum: agencies with beds)
- Learn more about funding
- Assess community needs & gaps

BoS CoC Scorecard

- The BoS CoC uses a scorecard for CoC grants
- A similar scorecard will be used for ESG grants
- The ESG scorecard will be shared when it is finalized. Until then, you can look at the CoC scorecard to understand what aspects you may be scored on.

What will the application process look like?

- Intent to apply form
- Application submitted to BoS
- Applicant presents project to regional committee for review and approval
- Application scored by BoS Project Review Committee using ESG scorecard
- Steering Committee approves priorities and list of projects to fund for July 2012-June 2013
- BoS submits priorities and list of projects to ESG office

Next Steps for Current ESG Grantees, HPRP Grantees and Interested Applicants

- Attend your Regional Committee Meetings
- Submit an Intent to Apply for ESG Form
- Sign up for our mailing list
- Watch for an RFP from the State or BoS CoC

Resources

- BoS ESG Information: www.ncceh.org/BoSESG
- Balance of State Continuum of Care Information:
 - www.ncceh.org/BoS
 - www.ncceh.org/BoSminutes
- NCCEH webpage:
 - www.ncceh.org
- Email us: bos@ncceh.org
- Call us: (919) 755-4393

Contact NCCEH

- Denise Neunaber
Executive Director
- Emila Sutton
Project Specialist/BoS Coord.
bos@ncceh.org
(919) 755-4393
- NCCEH Webpage: www.ncceh.org
 - Learn more! Join our mailing list! Become a member!

