

Balance of State Continuum of Care

Steering Committee Conference Call
Tuesday, August 2, 2011
10:30 AM

Welcome

- Roll Call
- Reminders:
- *6 to mute/unmute line
- *4 will increase/decrease volume
- If your phone plays music while on hold please do not put us on hold during the conference call.

Access to BoS Materials on Web

- BoS Overview:
www.ncceh.org/bos/
- BoS Minutes and Agendas:
www.ncceh.org/BoSminutes/
- Web page for prospective grantees:
www.ncceh.org/BoSgrantees/
- Web page where Point in Time Count data is listed:
www.ncceh.org/PITdata/

Review & Approve July Minutes

- <http://www.ncceh.org/BoSminutes/>

Agenda

- Update on FY2011 Pre-Application
- Scorecard Committee Report
- QPRs Due
- Subcommittee Meeting Reminders
- Regional Committee Updates
- Next meeting Tuesday, September 6 @
10:30am

Update on FY2011 Pre-Application

All Pre-Application documents are posted at:

<http://www.ncceh.org/bos/CoCAApplication/>

**Pre-Applications were due to NCCEH no later than
August 1, 2011 at 11:59PM**

Update on FY2011 Pre-Application

Pre-Applications Received: New Projects

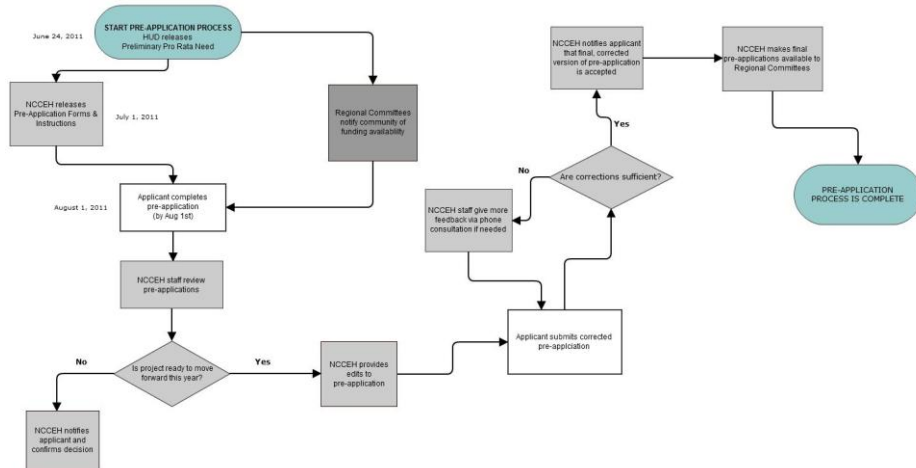
- Beacon Center LME S+C
- Community Link SHP-PH
- Eastpointe S+C
- Five County Mental Health S+C
- Greenville Community Shelter SHP-PH & SSO
- Greenville Housing Authority S+C
- New Direction Ministries SHP-TH
- Piedmont Behavioral Healthcare LME S+C
- Smoky Mountain Center Central S+C
- Streets to Homes SHP-PH

Pre-Applications Received: Renewal Projects

- Alamance-Caswell LME S+C (LME 2010)
- Christians United Outreach Center SHP-TH
- Crossroads Behavioral Healthcare LME SHP-PH (Iredell & Yadkin Renewal)
- Community Link SHP-TH (PRCOC Casework and Supportive Housing)
- ECBH S+C (ECBH S+C #1)
- Five County Mental Health LME S+C (Kerr-Tar Renewal 1 and Kerr-Tar Renewal 3)
- Graham Housing Authority S+C (GHA 2010)
- Greenville Community Shelter SHP-PH (Solid Ground)
- New Reidsville Housing Authority S+C (CoC S+C and Rockingham S+C)
- Piedmont Behavioral Healthcare S+C (PBH 2010 S+C Renewal #1)
- Rockingham County Help for the Homeless SHP-TH
- Surry Homeless and Affordable Housing Coalition SHP-PH
- Sandhills Community Action Program SHP-TH and S+C
- United Christian Ministries SHP-TH (Basset Center) and SHP-PH (UCM Voucher)

Pre-Application Process

http://www.ncceh.org/attachments/contentmanagers/3157/2011_BoS_Pre-App_Flowchart.pdf



Scorecard Committee Report

- Scorecard Committee met on July 20th and July 28th
- Updated scorecards from the Scorecard Committee were posted for Steering Committee review prior to meeting on the BoS Minutes/Agendas webpage: <http://www.ncceh.org/BoSminutes/>
- Steering Committee votes to finalize the 2011 BoS CoC Scorecards for New and Renewal Projects

QPRs

- All grantees must turn in QPRs to NCCEH
- Due 30 days after the end of each quarter of your operating year
- Download form at www.ncceh.org/BoSgrantees/
- Email to bos@ncceh.org or fax to 888-742-3465

QPRs/APRs due August and September:

- Mental Health Partners Catawba Co. S+C: QPR due 8.1.11
- Sandhills CAP Homeward Bound TH: QPR due 8.1.11
- Sandhills CAP S+C: QPR due 9.21.11

OVERDUE QPRs/APRs...

- Greenville Housing Authority S+C Seeds of Change: QPR due 7.27.11
- New Reidsville HA S+C NC19C703023 APR due 7.26.11 (annual end date of 4.26.11)
- Residential Treatment Services of Alamance: QPR due 6.1.11
- United Community Ministries
 - Basset Center TH: QPR due 6.1.11
 - PH Voucher Program: QPR due 7.1.11

BoS CoC Subcommittee Meetings

- Transitional Housing Subcommittee: August 9th @ 10:30am
- Permanent Housing Subcommittee: August 16 @ 10:30am
- Families Committee: August 23 @ 10:30am

- These calls are open to all interested parties in the BoS.

- Please register for the calls on our website calendar:
<http://www.ncceh.org/en/cev/mon/>

Regional Committee Updates

- Top two highlights from your region

Stay in touch!

- Email bos@ncceh.org or call 919.755.4393 with any questions or concerns.
- See you on the next call at 10:30 am on September 6th!