

Northeastern Homeless Coalition  
Region 11

June 13, 2023

**Minutes**

**Those Present:**

- Brad Gravely – River City
- Kisha Darden – Trillium
- Stacia Billups – Pasquotank DSS
- Tammy Kittrell – Trillium
- Lillian Dance – EIC, Inc.
- Yolanda Carter – EIC, Inc.
- Zinia Holley – ACI Dungarvin
- Amy Modlin – Trillium
- Lakitra Claude – Trillium
- Marti Chick-Ebey – Hampton VA
- Midge Hudyma – ECPPS
- Jacquelyn Miles – Hampton VA
- Michele Welsh – Trillium
- Nicole Rice – VOA (Hyde)
- Wendy Overton – Pasquotank DSS
- Quentin Jackson – Spring Life
- Brooke Coley – Trillium
- Carol Patterson – Albemarle Hopeline
- Stephanie Wyche – Camden DSS
- Donald Waltz – Community Collaborative
- Bethany Buttram – Perquimans EMS
- Laura Sykes – EIC, Inc.

**Roll Call/Introductions**

- The meeting was virtually. Those present introduced themselves and what agency they were representing.

**Steering Committee Updates**

- FY2023 CoC Program Competition is taking place
  - The Steering Committee approved the Funding and Performance Subcommittee's recommended FY2023 CoC Funding Priorities document
  - Trillium Health Resources is applying for CoC funding (PSH Program)
- Unsheltered Access Coordinator (UAC)– the role and responsibilities of the position were reviewed
  - Build trusting relationships
  - Collect contact information for follow-up
  - Assess and refer to coordinated entry
  - Connect to services and permanent housing
  - Refer to emergency shelter, when possible
  - Our region has appointed two coordinators – Quentin Jackson and Erica McCloud; the elected term is May to April
  - There will be an in-person regional leadership/UAC kick-off on June 15<sup>th</sup> in Graham, NC (Alamance Community College)
- NCCEH Emergency Shelter Technical Assistance Initiative – NCCEH staff is offering technical assistance to emergency shelters in the NC BoS CoC
  - The goal is to assist shelters in lowering barriers to shelter entry and establish housing focused practices that in line with the Written Standards
- 2023 PIT Count

- Total number of people counted for the entire NC BoS CoC was 3,311
- Region 11 reported 42 sheltered homeless and 37 unsheltered; no veterans were counted and 10 individuals were experiencing chronic homelessness

### **Coordinated Entry Presentation**

- See slide show presented by Amy Modlin

### **ESG Funding Opportunity**

- The ESG released the RFA for the 2024 ESG Grant competition on June 6<sup>th</sup>
- The fair share for the region is \$109,380
- There will be a webinar for all applicants on June 22<sup>nd</sup> from 2pm – 3:30pm
- NC ESG office RFA webinar will be held on June 13<sup>th</sup>, 15<sup>th</sup>, and 20<sup>th</sup>
- Project Applications are due to NCCEH on July 12<sup>th</sup>
- Project and regional applications are due to NC DHHS on August 21<sup>st</sup>
- Two agencies in the region have expressed interest in applying for ESG funding

### **Announcements**

- River City – there are currently 26 people on the waitlist for the hotel program

*The next meeting will be held virtually on Tuesday, July 11, 2023*

# Coordinated Entry

---

Region 11

# What is Coordinated Entry?

---

- Coordinated entry (CE) is a system that allows for a coordinated entry into your local homeless services.
- It increases the efficiency of a homeless assistance system by standardizing access to homeless services and coordinating program referrals.
- As part of the HEARTH regulations that govern Continuum of Care (CoC) and Emergency Solutions Grant (ESG) funding, HUD requires all CoCs across the country to implement coordinated entry.

# NC Balance of State Coordinated Entry

---

**Vision Statement:** Coordinated entry assists the NC Balance of State (BoS) to end homelessness by increasing exits to housing, decreasing length of time homeless and reducing returns to homelessness. Consumers can quickly access appropriate services to address housing crises through a right-sized, well-coordinated agency network.

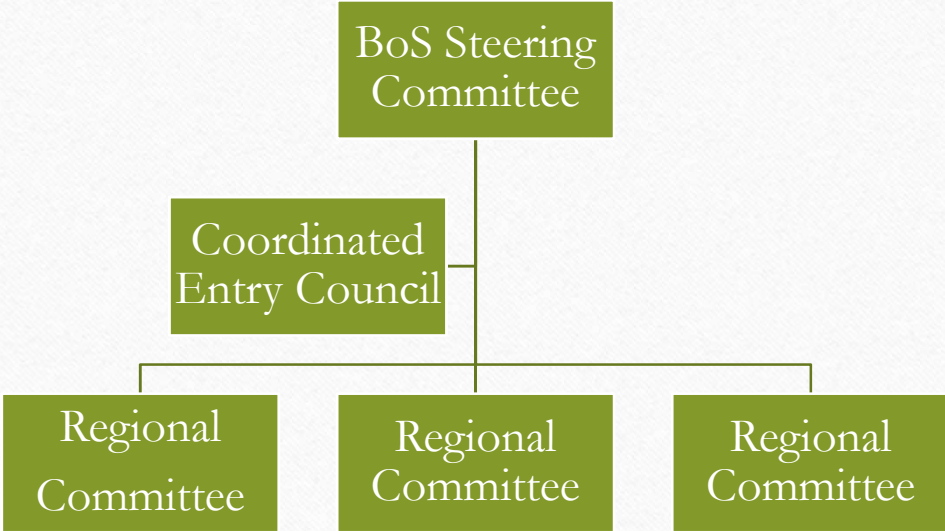
# Guiding Principles

---

- Sustainable
- Flexible
- Transparent and accountable
- Housing-focused
- Client-focused
- Collaboration-focused
- Easy to use

# Governance

## General Structure



# Coordinated Entry Models

---

- Centralized: Designated agency or agencies within a community will handle intake and referrals

OR

- Decentralized: All agencies will employ the common assessment and referral system for intake
  - Trillium (for members)
  - River City Community Development



# Types of Assessment

---

- Emergency Response Screening
- Service Assessment & Prioritization Tool (VI-SPDAT)
- Case Management Assessment

# Emergency Response Screening

---

- **Purpose:** Reduce entries into homeless system
- **When:** Immediately, as applicants present themselves to enter the homeless service system
- **How:** Regional Committees select an agency to complete screening in person and/or by phone as people initially access the homeless service system
- **Training:** Online

# Service Assessment & Prioritization Tool (VI-SPDAT)

---

- **Purpose:** Assign appropriate referral for client and prioritize which client will receive housing and services next
- **When:** 14 days after entering the system – VI-SPDAT is administered on Day 15
- **How:** Regional Committee will designate locations and staff to administer VI-SPDAT
- **Training:** All users complete free, online training

# Case Management Assessment

---

- **Purpose:** Standardized tool for case management to track outcomes
- **When:** At program entry, at housing entry, every six months thereafter until program discharge, twelve months after assistance ends
- **How:** Housing programs will administer this tool to all participants
- **Training:** Online training

# Next Steps?

---

- Region 11 needs to increase the number of agencies conducting assessments
- Schedule a meeting/training for agencies who would like to conduct assessments
- Volunteers? 😊
- Questions?