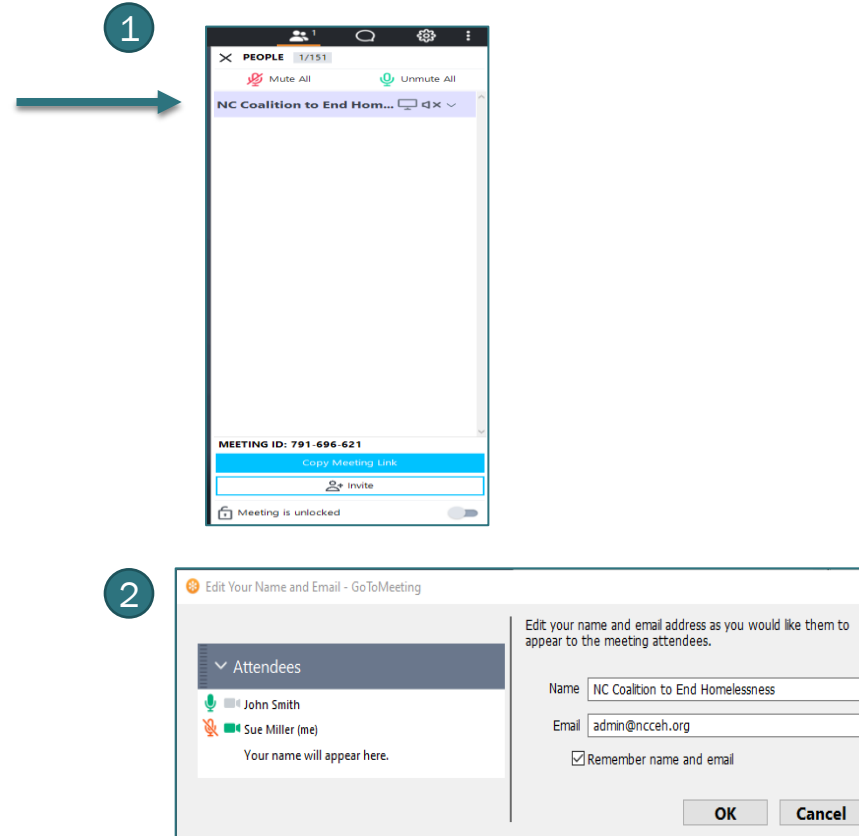


Coordinated Entry Council Meeting

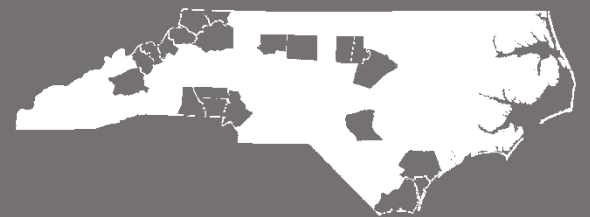
April 17, 2023

Roll Call

- We will conduct Roll Call for CE Leads and statewide representatives.
- All participants should enter their full names, so we can document their participation in the minutes.



Agenda

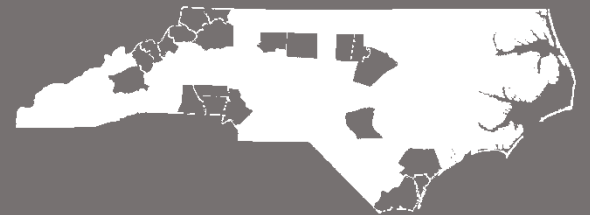


Agenda

- Core Team DRAFT Assessment Tool
- Unsheltered PIT Update/Next Steps
- Reminders



Core Team DRAFT Assessment Tool



Core Team

- NC BoS was selected in 2021 to take part in HUD's Coordinated Entry Equity Initiative
- The initiative's goal is to support communities in improving housing outcomes and the human experience for Black, Brown, Indigenous and all people of color.



Core Team

- From October 2021 - October 2022 NC BoS met bi-weekly with HUD Coaches
 - Developed an inclusive Core Team with a diverse range of local stakeholders to ensure the process is rooted in equity-based decision making.
 - Developed an overall results statement: All Black/African Americans experiencing homelessness in North Carolina Balance of State are swiftly assessed and connected to safe, stable, and suitable permanent housing and housing resources.
 - Developed a targeted goal statement: By December 2023, North Carolina Balance of State aims to proportionally increase the high scores of Black/African Americans assessed through a revised assessment to 43%.



Core Team

- HUD CE Equity Initiative ended October 2022, but the work DID NOT
- NC BoS has been working towards the end goal of creating an equitable assessment tool (to replace our current coordinated entry assessment tool VI-SPDAT)
- After 15 months of work and dedication, our Core Team has a draft assessment!
 - We did not want to re-create or update our current assessment tool
 - We did not want to re-traumatize people who were being assessed
 - We wanted to only ask questions that held value for HUD-funded permanent housing



Core Team

Timeline

- ✓ Revision with Stakeholders (January – March 2023)
- Pilot Phase (April – June 2023)
- Analysis and Revision with Community Phase (July – August 2023)
- Training Phase (September – October 2023)
- Launch Phase (November 2023 – January 2024)



Core Team

- Sections
 - Housing and Homeless History
 - Risks
 - Health and Wellness
 - Family Unit



Core Team

- Housing and Homeless History
 - How long has it been since you lived in your own place?
 - How many months have you been without a home, such as living outside or in shelter?
 - Where did you sleep last night?
 - Where will you sleep tonight?



Core Team

- Risks
 - Did you leave your previous or current living situation because you felt unsafe?
 - Have you experienced violence since becoming homeless?
 - Have you ever experienced violence with someone close to you?
 - Are you currently experiencing or feel you are at risk of experiencing violence?



Core Team

- Health and Wellness
 - Does anyone in your household have any physical or mental health conditions that are treated or have been treated by a professional?
 - Do you have lung cancer, kidney or liver failure, heart disease, or a substance use disorder?
 - Is the lack of housing making it hard to get to a doctor's office or take prescribed medications?
 - Do you have health insurance?



Core Team

- Family Unit
 - What is the date of birth of all family members?
 - Is anyone in the household pregnant?
 - How many children under the age of 18 are not currently staying with your family, but would live with you? (if you have a home)
 - How many adults 18 or older are not currently staying with your family, but would live with you? (if you have a home)

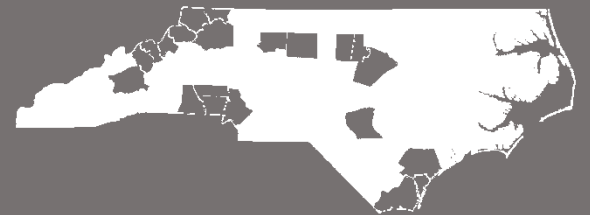


Core Team

- Motion to approve new coordinated entry assessment for pilot phase?



Unsheltered PIT Updates & Next Steps



Unsheltered PIT

Region	PIT Count Total as of April 6, 2023
Region 1	72
Region 2	171
Region 3	166
Region 4	116
Region 5	239
Region 6	28
Region 7	313
Region 8	50
Region 9	26
Region 10	21
Region 11	38
Region 12	22
Region 13	131

- 2023
Unsheltered PIT
Count 1393
persons
- 2022
Unsheltered PIT
Count 777
persons
- Difference of
616 (!!)



Unsheltered PIT

- Our goal is NOT to count unsheltered households on the night of Point In Time.
- Our goal is to connected unsheltered households to coordinated entry, services, and permanent housing.
- Please ensure agencies are following up with clients living unsheltered and working to get the household assessed and connected to resources.
- Please exit households from the appropriate project if no contact can be made after 90 days.

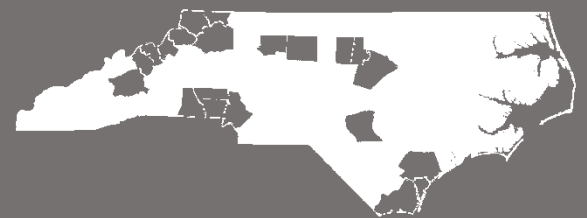


Unsheltered PIT

- **Reminder: Your goal is to ensure all people living unsheltered connect to services!**
 - Build trusting relationships
 - Collect contact info for follow-up
 - Assess and refer to By Name List (BNL)
 - Refer to emergency shelter, when possible
- Help prepare the region for the Unsheltered Point In Time Count. But also work on engagement throughout the entire year to make the PIT Count easier!
- Elected term is May - April



Reminders



The CoC has launched its 2023 CE Evaluation.

- In accordance with HUD Coordinated Entry Notice: Section II.B.15, the CoC began its CE evaluation process on **April 3, 2023**.
- HUD requires CoCs to solicit feedback at least annually from participating projects & from households that participated in CE during that time period.
- Surveys must address the quality & effectiveness of the entire CE experience for both participating projects & households.
- The CoC CE Council voted on 03/20/23, setting a timeline for survey distribution for CoC stakeholders & CE participants.



The CoC has launched its 2023 CE Evaluation.

Permanent Supportive Housing (PSH): PSH clients who have entered a PSH program in the last year will be offered the opportunity to complete the coordinated entry evaluation survey that asks about their experience of the coordinated entry system.

- **Timeframe for PSH survey is April 3, 2023, through May 26, 2023.**

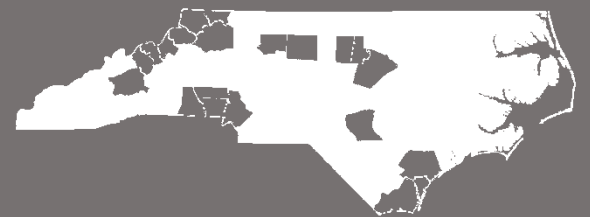
Shelters &/or Street Outreach: All people completing the VI-SPDAT will be offered the opportunity to complete the coordinated entry evaluation survey that asks about their experience of the coordinated entry system.

- **Timeframe for Shelter and/or Street Outreach is May 15, 2023, through May 26, 2023.**

Rapid Rehousing: All clients housed by a rapid rehousing program in the CoC must receive this survey within 30 days (before or after) they are housed. Ongoing.



Updates



Updates

- BoS staffing update
- Next CEC meeting – May 15, 2023



Coordinated Entry questions

Ashley Von Hatten
Ashley@ncceh.org

NCEndHomelessness 

@NCHomelessness 

nc_end_homelessness 

CE HMIS questions

Nicole Purdy
Nicole@ncceh.org

Contact NC Balance of State CoC Staff

bos@ncceh.org
919.755.4393

Contact NCCEH Data Center Help Desk

hmis@ncceh.org
919.410.6997

