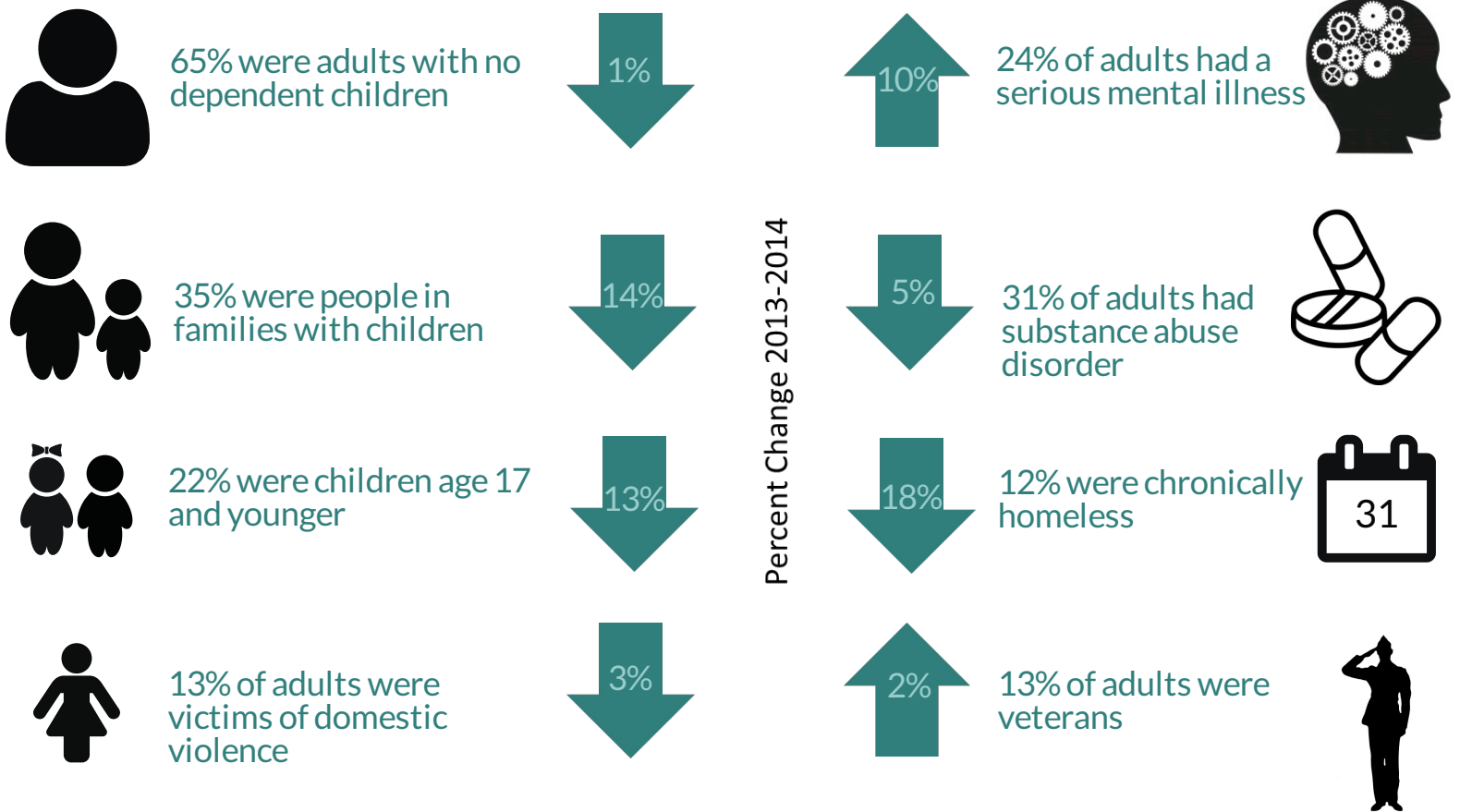
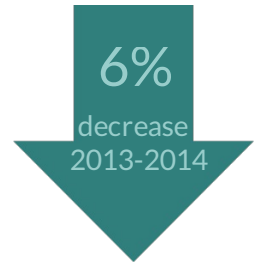
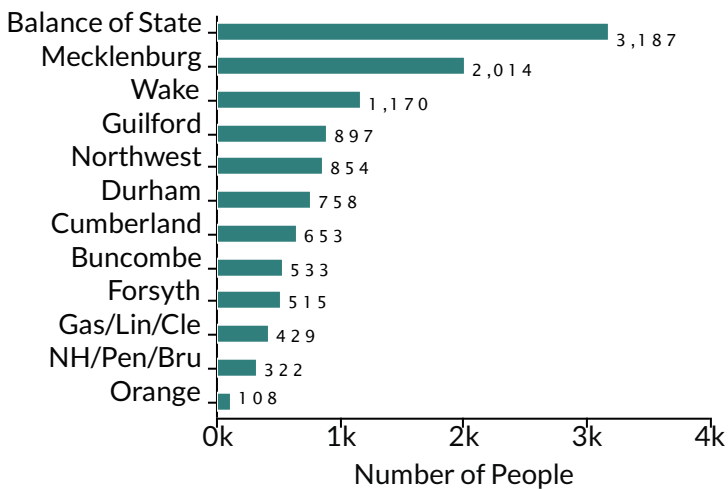


# Who is experiencing homelessness in North Carolina?

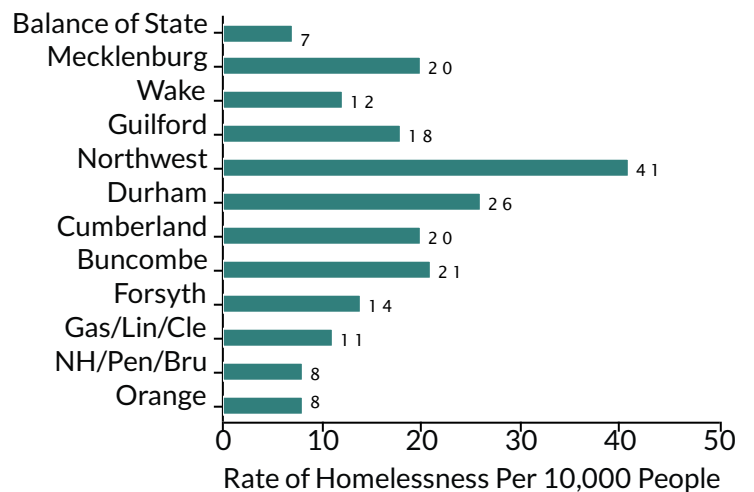
On one night during the last week of January 2014,



Homeless Persons by CoC



Rate of Homelessness by CoC



The first graph presents the actual total number of homeless people in each Continuum of Care (CoC). The second presents the number of homeless people in the context of a CoC's population. The data is expressed per 10,000 people to allow for comparison between different-sized CoCs.

## Definitions

- **Emergency shelter** provides temporary overnight shelter for homeless persons for up to 90 days. This includes domestic violence shelters and seasonal shelters that are open during high-demand times of the year (usually cold-weather months).
- **Transitional housing** provides temporary housing and supportive services for homeless persons for 12 to 24 months.
- **Unsheltered locations** are places not meant for human habitation where homeless people sleep. These places include cars, parks, abandoned buildings, bus/train stations, encampments, and the streets.
- **Chronically homeless** indicates an individual or a family with an adult head of household who:
  - Has a disabling condition (serious mental illness, substance use disorder, developmental disability, physical disability)
  - AND**
  - Has been homeless and living in a place not meant for human habitation or an emergency shelter continuously for at least 1 year or on at least 4 separate occasions in the last 3 years

## Continuum of Care (CoC) Geographic Areas

