

TUESDAYS @ 2: REDUCTIONS IN CHRONIC HOMELESSNESS

Winston-Salem
October 15, 2013



North Carolina Coalition to End Homelessness

securing resources • encouraging public dialogue • advocating for public policy change

919.755.4393 • www.ncceh.org

Tuesdays @ 2: Reductions in Chronic Homelessness

- Asheville: August 20th
 - ▣ Posted on our website:
<http://www.ncceh.org/articles/tuesdays-two-reducing-chronic-homelessness-series-asheville/>
- Wilmington: September 24th
 - ▣ Posted on our website:
<http://www.ncceh.org/articles/tuesdays-two-reducing-chronic-homelessness-series-wilmington/>
- Winston-Salem: October 15th

<http://www.ncceh.org/trainings/upcoming>

Today's Presenters

- Andrea Kurtz

Senior Director, Housing Strategies

Ten-Year Plan to End Chronic Homelessness

- Tim West

Planning Program Supervisor

City of Winston-Salem,

Community and Business Development Department

The Long Road Home:

Creating Common Vision &

448

Collective Action

To End Homelessness



Presentation to City of Winston-Salem
October 2013

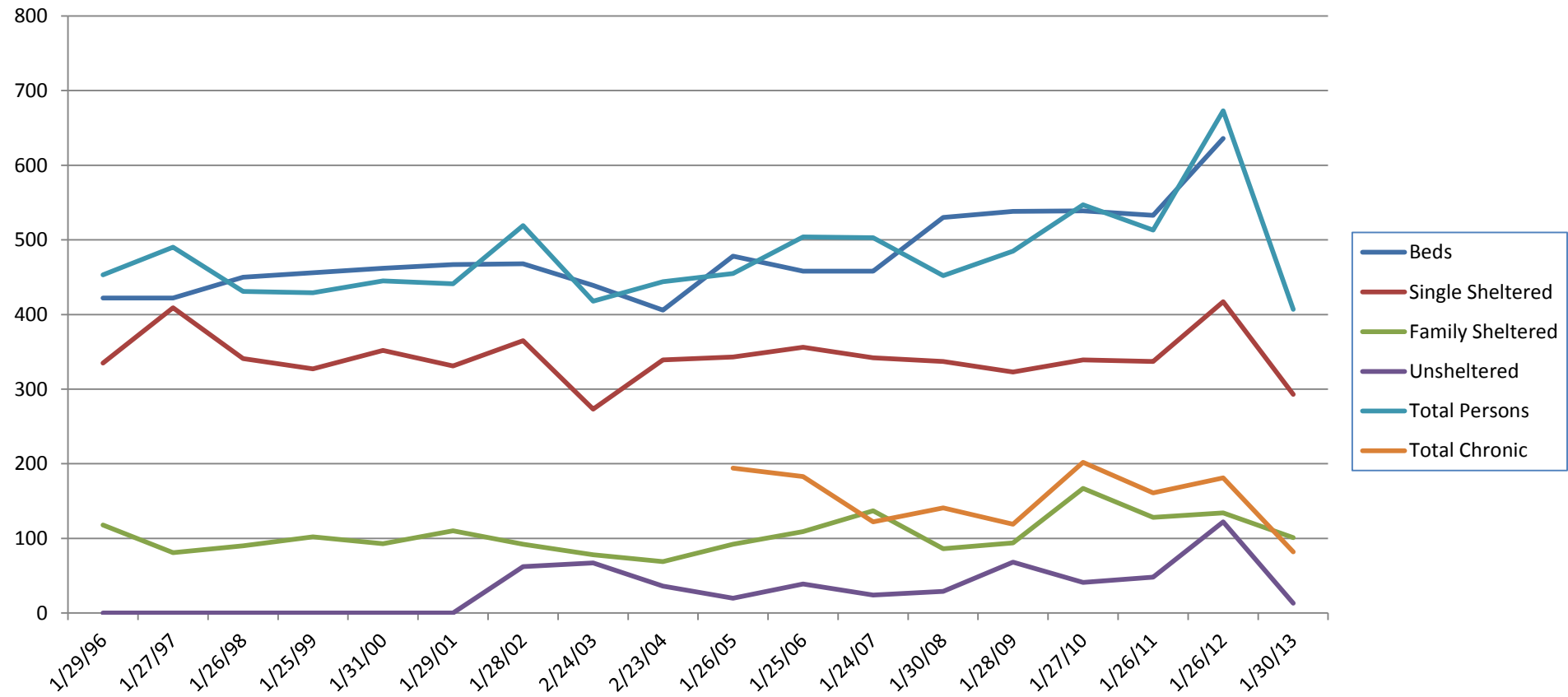


Envisioning a Future without Chronic Homelessness

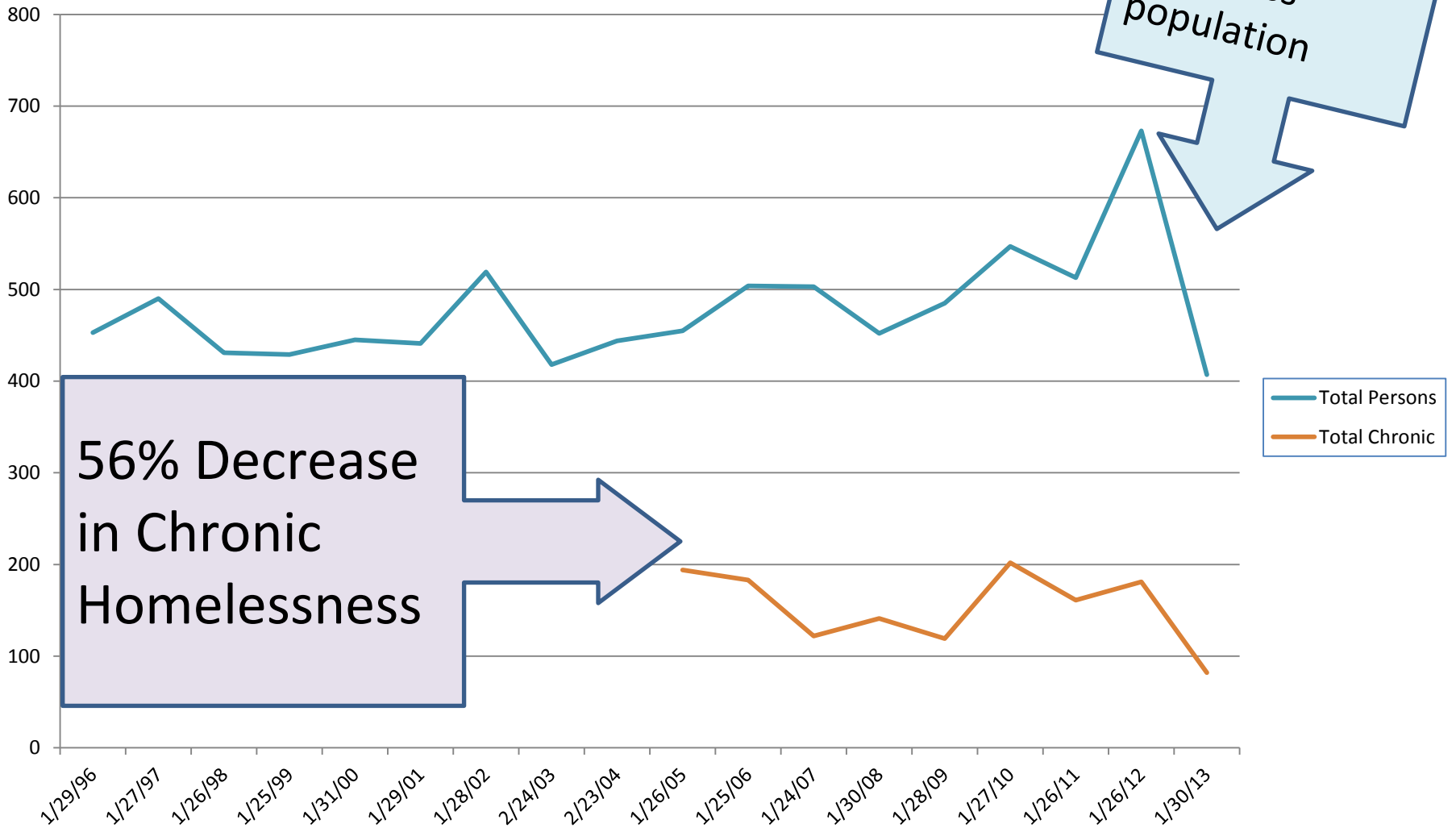
VISION STATEMENT

Winston-Salem/Forsyth County, with the full support of the community and homeless service providers, will provide effective solutions and accessible services to eliminate chronic homelessness and improve the system's effectiveness for all persons experiencing a housing crisis.

Winston-Salem/Forsyth County Point in Time Count 1996-2013



Winston-Salem/Forsyth County Point in Time Count 1996-2013



Background & Progress

2005- Blue Ribbon Taskforce on Homelessness

Goals: 598 Units of SH

Goals: Implement Housing First Strategy

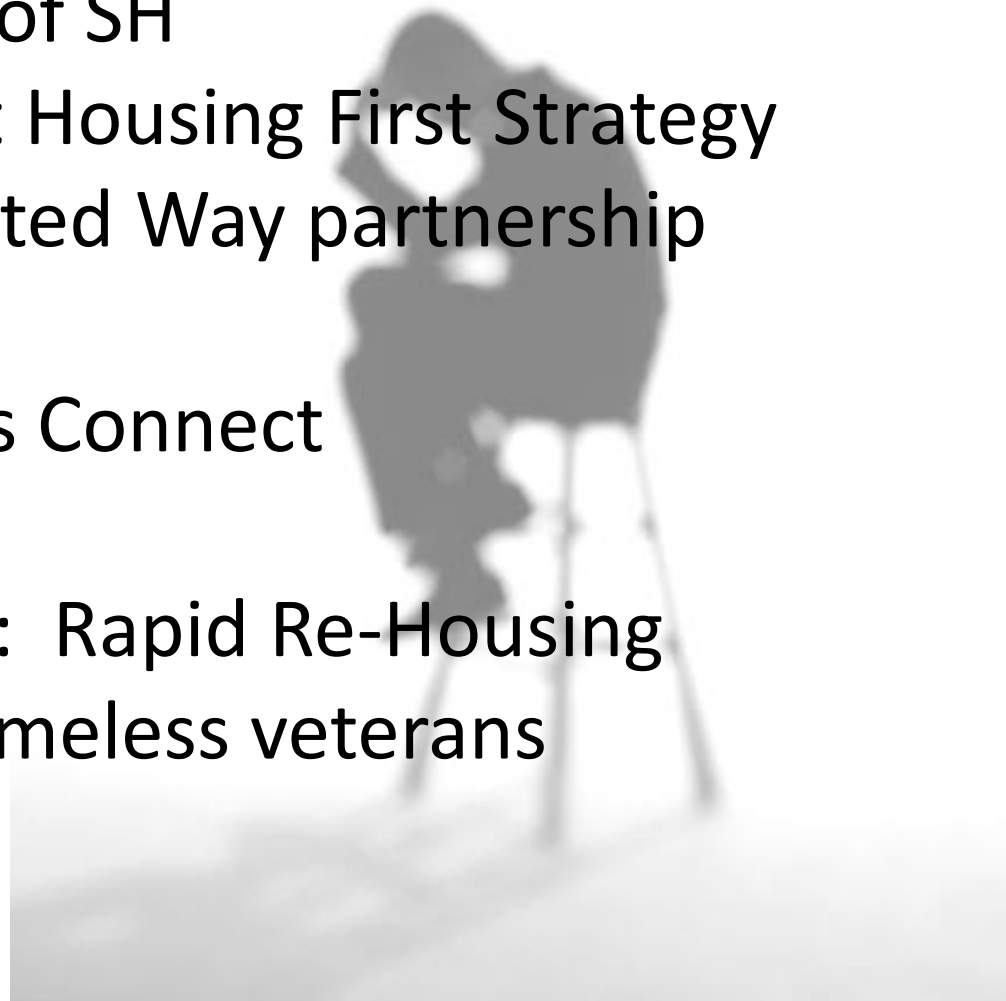
2006- City/County/United Way partnership formed

2007- Project Homeless Connect

2007- 1st SOAR Project

2009- “HPRP” Program: Rapid Re-Housing

2011- Programs for homeless veterans



Understanding our Data Moving in the Same Direction:

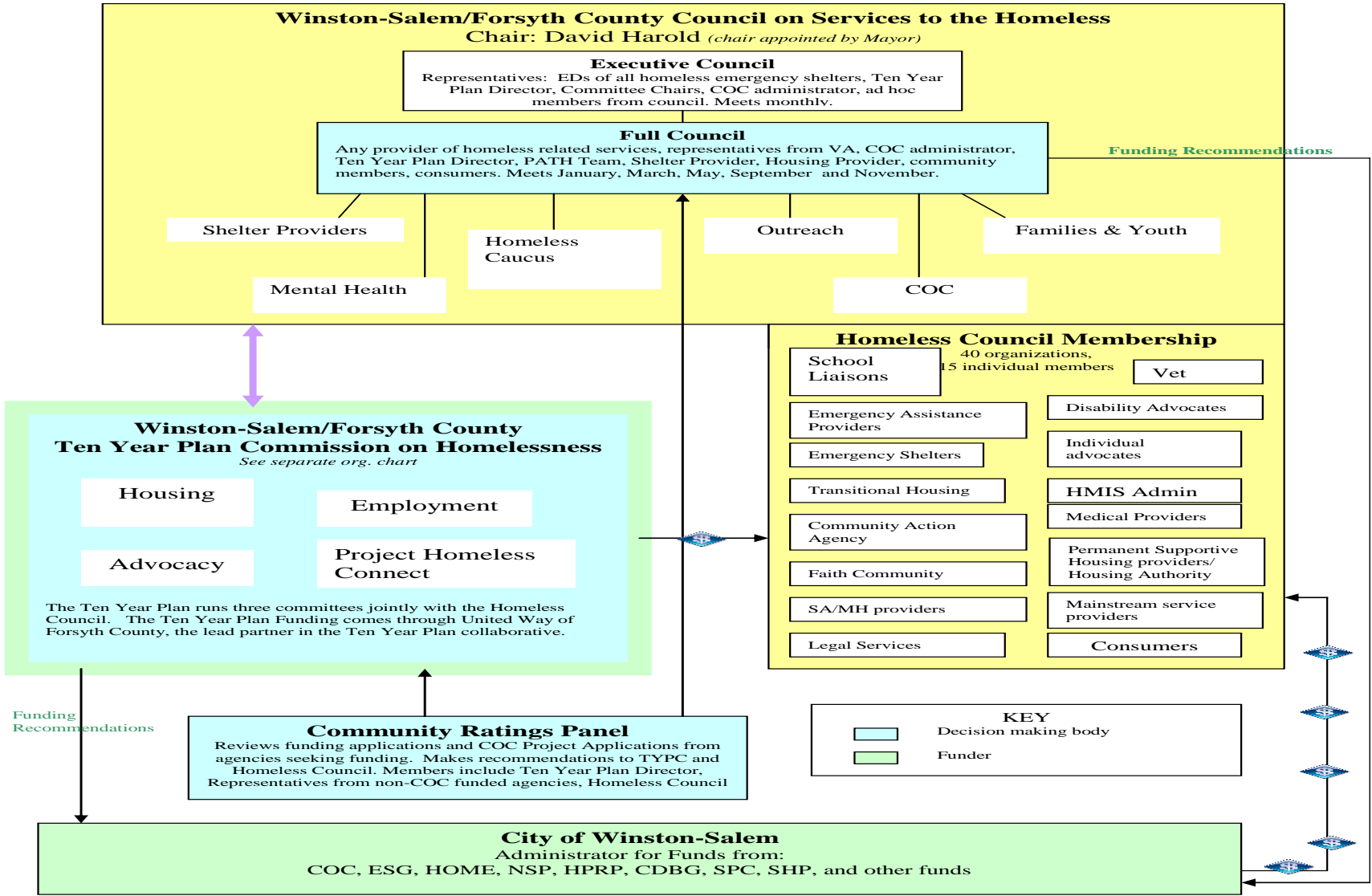


**Ending Homelessness, not
Ending Poverty**

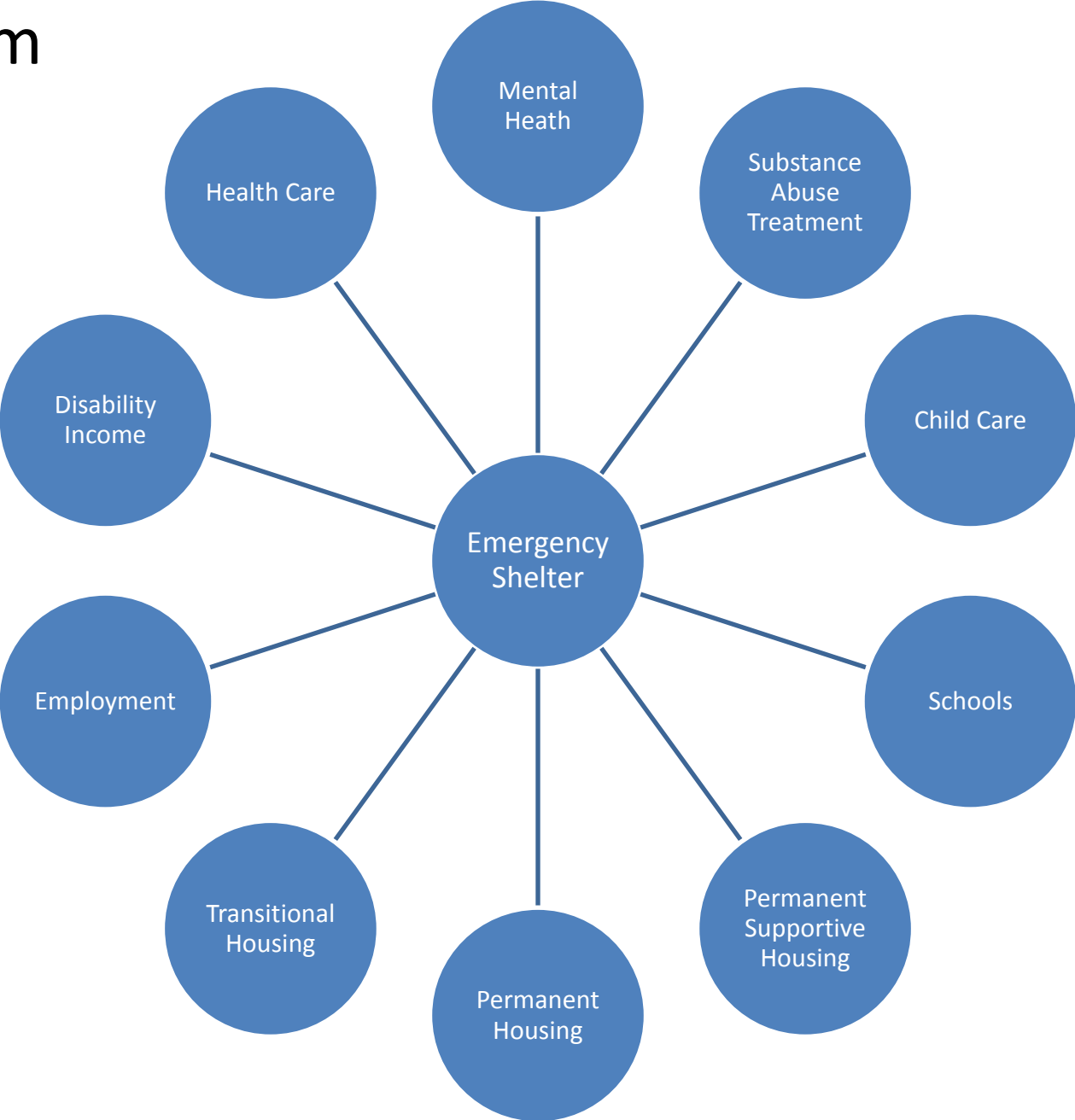
MOVING TOWARDS A COORDINATED SYSTEM

Understanding Our System

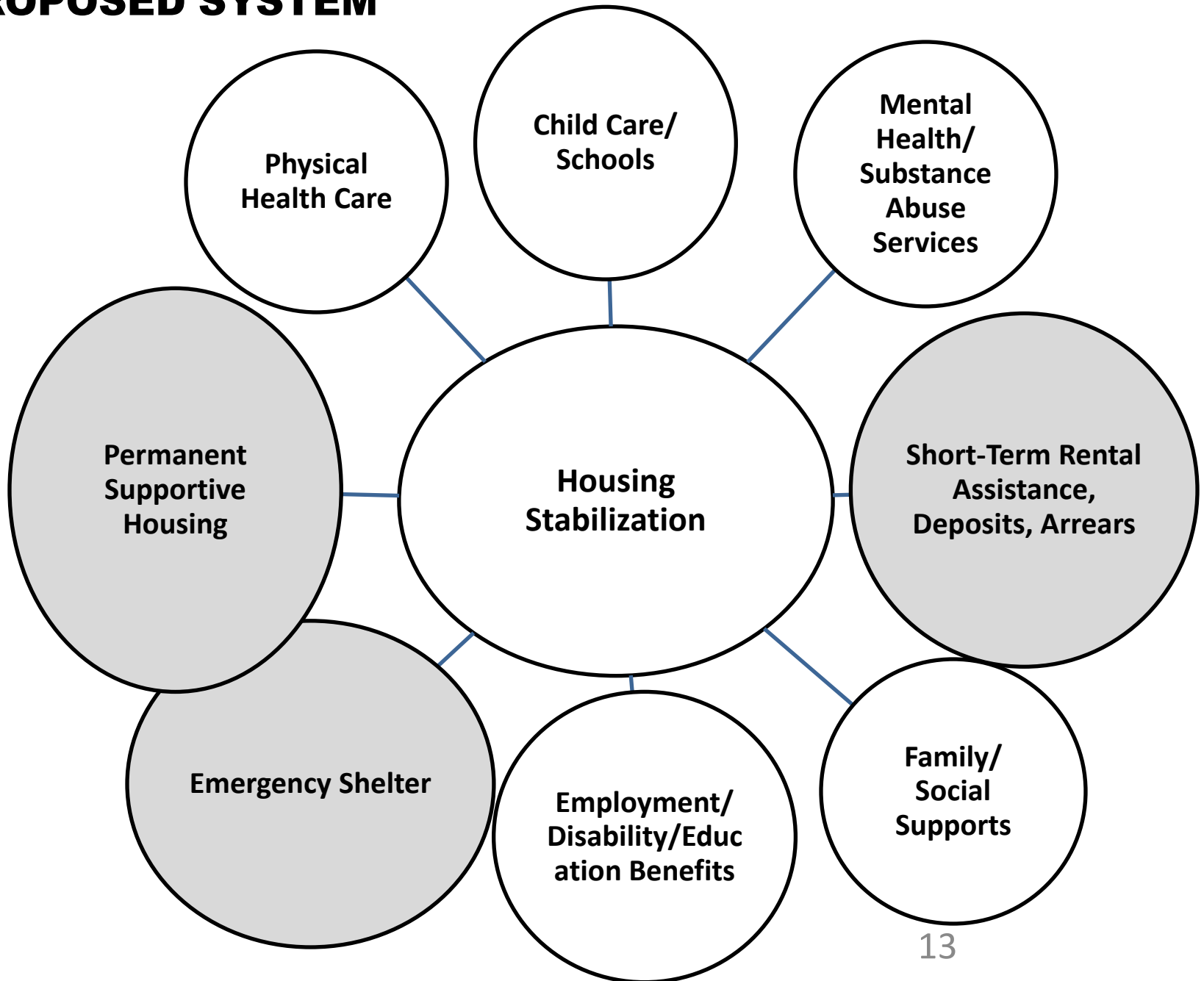
Winston-Salem Forsyth County Continuum of Care Leadership/ Organizational Chart



How the System Developed



PROPOSED SYSTEM



Intake Specialists from Homeless Service Providers

COMMUNITY COORDINATED INTAKE CENTER

- 1) Director
- 2) Housing Specialist
- 3) Data Entry
- 4) Intake specialists (in-kind)
- 5) Rapid re-housing fund
- 6) Shelter Plus Care management
- 7) Intake review (weekly)
- 8) Hard Case review (weekly or as needed)

Clients, walk-ins & Referrals from Homeless Service Providers, Mental Health Courts, Jails, hospitals. Everyone admitted to shelter must come within 48 hours.

Housing Placement/ Diversion

Supportive Services

Food Stamps, SOAR, Social Security, case management programs, transitional housing/treatment programs, mental health services, health care providers, head start, veteran services, substance abuse services, etc.

Shelters, when no other option available

Communication

**FOCUS ON PERMANENT HOUSING:
USING PSH AND RAPID REHOUSING TO
MEET GOALS**

Supportive Housing Development

TEN YEAR PLAN GOAL:

Develop 598 Units of Supportive Housing

PROGRESS TO DATE

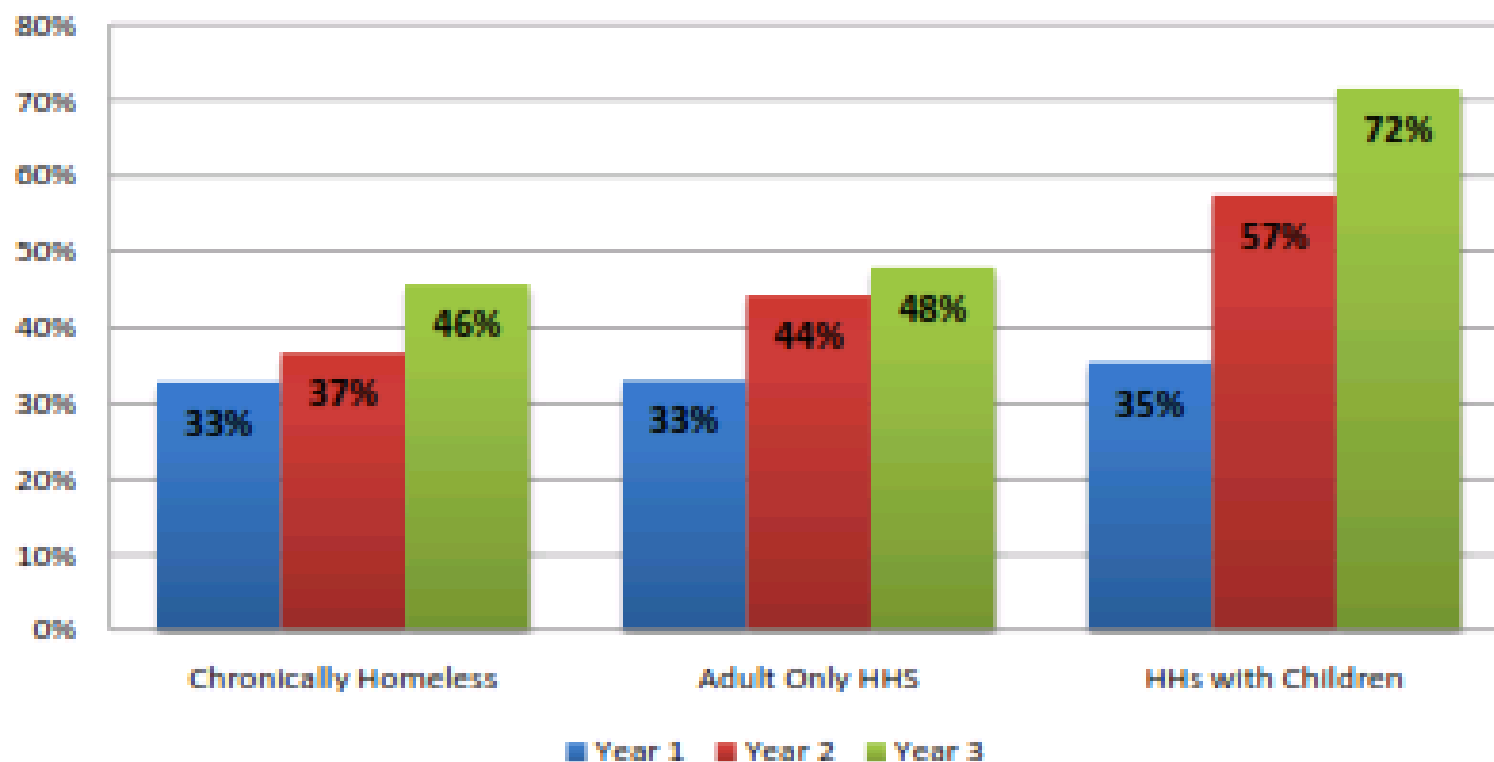
Year	Permanent Supportive Housing	Transitional Housing
2006	12	28
2007	34	17
2008	8	48
2009	135	28
2010	40	0
2011	10	0
2012	67	24
2013	35	0
TOTAL:	341	145



81% of GOAL

CHANGE IN HOUSING PLACEMENT FROM 2009 to 2012 Emergency Shelters

5a. Exits to Permanent Housing by Entry Year



Questions



Tuesdays @ 2: Reductions in Chronic Homelessness

- Asheville: August 20th
 - Posted on our website:
<http://www.ncceh.org/articles/tuesdays-two-reducing-chronic-homelessness-series-asheville/>
- Wilmington: September 24th
 - Posted on our website:
<http://www.ncceh.org/articles/tuesdays-two-reducing-chronic-homelessness-series-wilmington/>
- Winston-Salem: October 15th
 - Will be posted on our website:
<http://www.ncceh.org/trainings/previous/>